

Nur für Forschungszwecke

GLO1 Monoklonaler Antikörper

Katalog-Nr.:68242-1-Ig



Allgemeine Informationen

Katalog-Nr.: 68242-1-Ig	GenBank-Zugangsnummer: BC001741	Reinigungsmethode: Protein-A-Reinigung
Größe: 150ul , Konzentration: 1000 µg/ml von2739 Nanodrop;	GeneID (NCBI): glyoxalase I	CloneNo.: 1B7A8
Wirt: Maus	Vollständiger Name: glyoxalase I	Empfohlene Verdünnungen: WB 1:1000-1:6000
Isotyp: IgG2a	Berechnete Masse: 21 kDa	
Immunogen Katalognummer: AG7314	Beobachtete Masse: 21-25 kDa	

Anwendungen

Geprüfte Anwendungen:
WB, ELISA

Getestete Reaktivität:
Human, Maus, Ratte

Positivkontrollen:

WB : HEK-293-Zellen, HepG2-Zellen, Jurkat-Zellen, K-562-Zellen, LNCaP-Zellen

Hintergrundinformationen

Glo1 (glyoxalase I) is a cytosolic protein expressed in all mammalian cells. Its physiological function is the detoxification of MG (methylglyoxal), which is a potent precursor of AGEs (advanced glycation end-products). Glo1 is known to play a role in many diseases including diabetes mellitus, Alzheimer's disease, and cancer.

Lagerung

Lagerungsbedingungen:
Bei -20°C lagern. Nach dem Versand ein Jahr lang stabil

Lagerungspuffer:
PBS mit 0.02% Natriumazid und 50% Glycerin pH 7.3.

Aliquotieren ist nicht notwendig bei -20°C Lagerung

*** 20ul-Größen enthalten 0.1% BSA

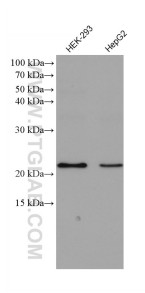
For technical support and original validation data for this product please contact:

T: 1 (888) 4PTGLAB (1-888-478-4522) (toll free in USA), or 1(312) 455-8498 (outside USA)

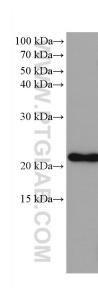
E: proteintech@ptglab.com
W: ptglab.com

This product is exclusively available under Proteintech Group brand and is not available to purchase from any other manufacturer.

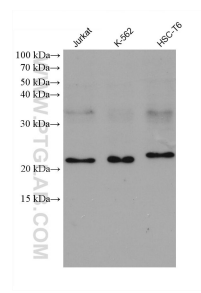
Ausgewählte Validierungsdaten



Various lysates were subjected to SDS PAGE followed by western blot with 68242-1-Ig (GLO1 antibody) at dilution of 1:3000 incubated at room temperature for 1.5 hours.



LNCaP cells were subjected to SDS PAGE followed by western blot with 68242-1-Ig (GLO1 antibody) at dilution of 1:3000 incubated at room temperature for 1.5 hours.



Various lysates were subjected to SDS PAGE followed by western blot with 68242-1-Ig (GLO1 antibody) at dilution of 1:3000 incubated at room temperature for 1.5 hours.