

Nur für Forschungszwecke

CBX2 Monoklonaler Antikörper

Katalog-Nr.:68244-1-Ig



Allgemeine Informationen

Katalog-Nr.: 68244-1-Ig	GenBank-Zugangsnummer: BC004252	Reinigungsmethode: Protein-G-Reinigung
Größe: 150ul, Konzentration: 1000 µg/ml von	GeneID (NCBI): 84733	CloneNo.: 1D3H3
Nanodrop;	Vollständiger Name: chromobox homolog 2 (Pc class homolog, Drosophila)	Empfohlene Verdünnungen: WB 1:5000-1:50000
Wirt: Maus	Berechnete Masse: 56 kDa	
Isotyp: IgG1	Beobachtete Masse: 65-70 kDa	
Immunogen Katalognummer: AG8311		

Anwendungen

Geprüfte Anwendungen: WB, ELISA	Positivkontrollen: WB : HepG2-Zellen, HEK-293-Zellen, HeLa-Zellen, Jurkat-Zellen, K-562-Zellen
Getestete Reaktivität: Human	

Hintergrundinformationen

The chromobox homolog protein 2 (CBX2) is a critical component of the PRC1 complex involved in antiviral innate immunity, neuronal, and gonadal differentiation, axial patterning during embryonic development, cell proliferation, and senescence (PMID: 32870972). CBX2 has 2 isoforms with the molecular mass of 23 and 56 kDa. Sometimes higher molecular weight around 65-70 kDa can also be observed, which may be a modified variant of CBX2.

Lagerung

Lagerungsbedingungen:
Bei -20°C lagern. Nach dem Versand ein Jahr lang stabil
Lagerungspuffer:
PBS mit 0.02% Natriumazid und 50% Glycerin pH 7.3.
Aliquotieren ist nicht notwendig bei -20°C Lagerung

*** 20ul-Größen enthalten 0.1% BSA

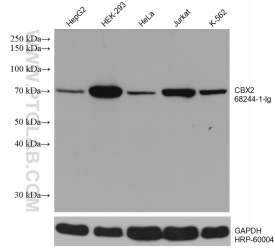
For technical support and original validation data for this product please contact:

T: 1 (888) 4PTGLAB (1-888-478-4522) (toll free in USA), or 1(312) 455-8498 (outside USA)

E: proteintech@ptglab.com
W: ptglab.com

This product is exclusively available under Proteintech Group brand and is not available to purchase from any other manufacturer.

Ausgewählte Validierungsdaten



Various lysates were subjected to SDS PAGE followed by western blot with 68244-1-Ig (CBX2 antibody) at dilution of 1:10000 incubated at room temperature for 1.5 hours. The membrane was stripped and reblotted with HRP-conjugated GAPDH Monoclonal antibody (HRP-60004) as loading control.