

Nur für Forschungszwecke

KLK8 Monoklonaler Antikörper

Katalog-Nr.:68247-1-Ig



Allgemeine Informationen

Katalog-Nr.: 68247-1-Ig	GenBank-Zugangsnummer: BC040887	Reinigungsmethode: Protein-A-Reinigung
Größe: 150ul , Konzentration: 1000 µg/ml von11202 Nanodrop;	GeneID (NCBI): 11202	CloneNo.: 2F3A8
Wirt: Maus	Vollständiger Name: kallikrein-related peptidase 8	Empfohlene Verdünnungen: WB 1:5000-1:50000 IF 1:400-1:1600
Isotyp: IgG2a	Berechnete Masse: 28 kDa	
Immunogen Katalognummer: AG5642	Beobachtete Masse: 28 kDa	

Anwendungen

Geprüfte Anwendungen: IF, WB, ELISA	Positivkontrollen:
Getestete Reaktivität: Human	WB : Jurkat-Zellen, A431-Zellen, EC109-Zellen, MOLT-4-Zellen IF : SH-SY5Y-Zellen,

Hintergrundinformationen

KLK8(Kallikrein-8) is also named as NRPN, PRSS19, TADG14.It is a new member of the human kallikrein family, which is predicted to be secreted and expected to be present in biological fluids (PMID:12507964).The protein is detectable in ovarian cancer tissue extracts, serum, and ascites fluid, indicating that it may serve as a new ovarian cancer marker (PMID:12782581). KLK8 has one predicted glycosylation site (PMID:20940292) and it has some isoforms produced by alternative splicing.

Lagerung

Lagerungsbedingungen:
Bei -20°C lagern. Nach dem Versand ein Jahr lang stabil
Lagerungspuffer:
PBS mit 0.02% Natriumazid und 50% Glycerin pH 7.3.
Aliquotieren ist nicht notwendig bei -20°C Lagerung

*** 20ul-Größen enthalten 0.1% BSA

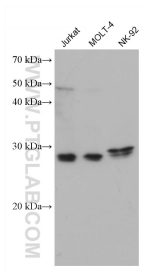
For technical support and original validation data for this product please contact:

T: 1 (888) 4PTGLAB (1-888-478-4522) (toll free in USA), or 1(312) 455-8498 (outside USA)

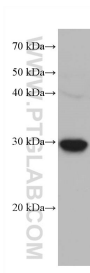
E: proteintech@ptglab.com
W: ptglab.com

This product is exclusively available under Proteintech Group brand and is not available to purchase from any other manufacturer.

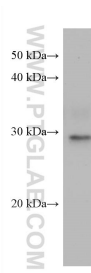
Ausgewählte Validierungsdaten



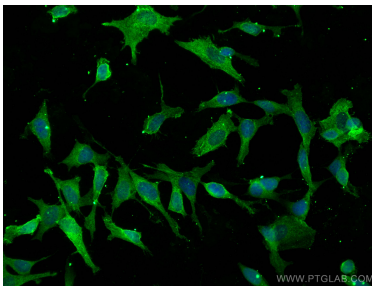
Various lysates were subjected to SDS PAGE followed by western blot with 68247-1-Ig (KLK8 antibody) at dilution of 1:10000 incubated at room temperature for 1.5 hours.



EC109 cells were subjected to SDS PAGE followed by western blot with 68247-1-Ig (KLK8 antibody) at dilution of 1:10000 incubated at room temperature for 1.5 hours.



A431 cells were subjected to SDS PAGE followed by western blot with 68247-1-Ig (KLK8 antibody) at dilution of 1:10000 incubated at room temperature for 1.5 hours.



Immunofluorescent analysis of (4% PFA) fixed SH-SY5Y cells using KLK8 antibody (68247-1-Ig, Clone: 2F3A8) at dilution of 1:800 and CoraLite®488-Conjugated AffiniPure Goat Anti-Mouse IgG(H+L).