

Nur für Forschungszwecke

PDCD2L Monoklonaler Antikörper

Katalog-Nr.:68249-1-Ig



Allgemeine Informationen

Katalog-Nr.: 68249-1-Ig	GenBank-Zugangsnummer: BC006146	Reinigungsmethode: Protein-G-Reinigung
Größe: 150ul, Konzentration: 1000 µg/ml von84306 Nanodrop;	GeneID (NCBI): programmed cell death 2-like	CloneNo.: 2G12C4
Wirt: Maus	Vollständiger Name: programmed cell death 2-like	Empfohlene Verdünnungen: WB 1:5000-1:50000
Isotyp: IgG1	Berechnete Masse: 358 aa, 39 kDa	
Immunogen Katalognummer: AG30807	Beobachtete Masse: 39 kDa	

Anwendungen

Geprüfte Anwendungen: WB, ELISA	Positivkontrollen: WB : A549-Zellen, HCT 116-Zellen, HeLa-Zellen, HepG2-Zellen, K-562-Zellen, LNCaP-Zellen
Getestete Reaktivität: Human	

Hintergrundinformationen

PDCD2L was aberrantly expressed in multiple types of human cancers, and associated with clinical stage and molecular subtype and PDCD2L could be served as a biomarker of CRC (PMID: 35216602).

Lagerung

Lagerungsbedingungen:
Bei -20°C lagern. Nach dem Versand ein Jahr lang stabil
Lagerungspuffer:
PBS mit 0.02% Natriumazid und 50% Glycerin pH 7.3.
Aliquotieren ist nicht notwendig bei -20°C Lagerung

***** 20ul-Größen enthalten 0.1% BSA**

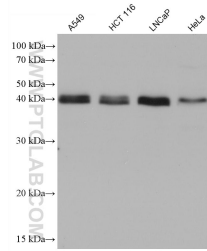
For technical support and original validation data for this product please contact:

T: 1 (888) 4PTGLAB (1-888-478-4522) (toll free
in USA), or 1(312) 455-8498 (outside USA)

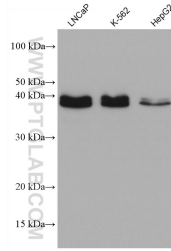
E: proteintech@ptglab.com
W: ptglab.com

This product is exclusively available under Proteintech Group brand and is not available to purchase from any other manufacturer.

Ausgewählte Validierungsdaten



A549 cells were subjected to SDS PAGE followed by western blot with 68249-1-Ig (PDCD2L antibody) at dilution of 1:10000 incubated at room temperature for 1.5 hours.



Various lysates were subjected to SDS PAGE followed by western blot with 68249-1-Ig (PDCD2L antibody) at dilution of 1:5000 incubated at room temperature for 1.5 hours.