

Nur für Forschungszwecke

CNTN1 Monoklonaler Antikörper

Katalog-Nr.:68252-1-Ig



Allgemeine Informationen

Katalog-Nr.: 68252-1-Ig	GenBank-Zugangsnummer: BC036569	Reinigungsmethode: Protein-G-Reinigung
Größe: 150ul , Konzentration: 1000 µg/ml von1272 Nanodrop;	GeneID (NCBI): contactin 1	CloneNo.: 1C1D4
Wirt: Maus	Vollständiger Name: contactin 1	Empfohlene Verdünnungen: WB 1:5000-1:50000
Isotyp: IgG1	Berechnete Masse: 1018 aa, 113 kDa	
Immunogen Katalognummer: AG5030	Beobachtete Masse: 130-135 kDa	

Anwendungen

Geprüfte Anwendungen: WB, ELISA	Positivkontrollen: WB : A549-Zellen, Hausschwein-Cerebellum-Gewebe, Hausschwein-Hirngewebe, Kaninchen-Cerebellum- Gewebe, Kaninchenhirngewebe
Getestete Reaktivität: Hausschwein, Human, Kaninchen	

Hintergrundinformationen

Contactin-1 (CNTN1), also known as Glycoprotein gp135 or Neural cell surface protein F3, is a neuronal cell adhesion molecule of the immunoglobulin superfamily (PMID: 3049624). It consists of six Ig domains, four fibronectin-like motifs, and a glycosylphosphatidylinositol (GPI)-moiety. Expressed by the central and peripheral neurons, CNTN1 contributes to the formation and function of neuronal connections. It plays a role in axon extension and formation of septate-like junctions between axons and myelinating glial cells (PMID: 23724143). In addition, acting as a ligand for Notch, CNTN1 initiates a NOTCH/DTX1 signaling pathway that promotes oligodendrocyte maturation and myelination (PMID: 14567914).

Lagerung

Lagerungsbedingungen:
Bei -20°C lagern. Nach dem Versand ein Jahr lang stabil
Lagerungspuffer:
PBS mit 0.02% Natriumazid und 50% Glycerin pH 7.3.
Aliquotieren ist nicht notwendig bei -20°C Lagerung

*** 20ul-Größen enthalten 0.1% BSA

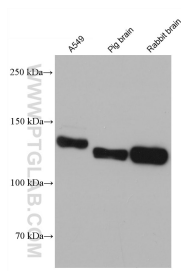
For technical support and original validation data for this product please contact:

T: 1 (888) 4PTGLAB (1-888-478-4522) (toll free
in USA), or 1(312) 455-8498 (outside USA)

E: proteintech@ptglab.com
W: ptglab.com

This product is exclusively available under Proteintech Group brand and is not available to purchase from any other manufacturer.

Ausgewählte Validierungsdaten



Various lysates were subjected to SDS PAGE followed by western blot with 68252-1-Ig (CNTN1 antibody) at dilution of 1:20000 incubated at room temperature for 1.5 hours.