

Nur für Forschungszwecke

# ABL1 Monoklonaler Antikörper

Katalog-Nr.:68254-1-Ig



## Allgemeine Informationen

<b>Katalog-Nr.:</b> 68254-1-Ig	<b>GenBank-Zugangsnummer:</b> NM_005157	<b>Reinigungsmethode:</b> Protein-A-Reinigung
<b>Größe:</b> 150ul , Konzentration: 1000 µg/ml von25 Nanodrop;	<b>GeneID (NCBI):</b> c-abl oncogene 1, receptor tyrosine kinase	<b>CloneNo.:</b> 1E7A5
<b>Wirt:</b> Maus	<b>Vollständiger Name:</b> c-abl oncogene 1, receptor tyrosine kinase	<b>Empfohlene Verdünnungen:</b> WB 1:2000-1:10000
<b>Isotyp:</b> IgG2b	<b>Berechnete Masse:</b> 123 kDa	
<b>Immunogen Katalognummer:</b> AG26152	<b>Beobachtete Masse:</b> 140 kDa	

## Anwendungen

<b>Geprüfte Anwendungen:</b> FC, WB, ELISA	<b>Positivkontrollen:</b> WB : LNCaP-Zellen, HEK-293-Zellen, HeLa-Zellen, Jurkat-Zellen, K-562-Zellen
<b>Getestete Reaktivität:</b> Human	

## Hintergrundinformationen

ABL1, also named as ABL, JTK7, c-ABL and p150, belongs to the protein kinase superfamily, Tyr protein kinase family and ABL subfamily. ABL1 regulates cytoskeleton remodeling during cell differentiation, cell division and cell adhesion. ABL1 localizes to dynamic actin structures, and phosphorylates CRK and CRKL, DOK1, and other proteins controlling cytoskeleton dynamics. It regulates DNA repair potentially by activating the proapoptotic pathway when the DNA damage is too severe to be repaired. ABL1 catalyze the reaction: ATP + a [protein]-L-tyrosine = ADP + a [protein]-L-tyrosine phosphate. A chromosomal aberration involving ABL1 is a cause of chronic myeloid leukemia (CML) [MIM:608232]. Translocation t(9;22)(q34;q11) with BCR. The translocation produces a BCR-ABL found also in acute myeloid leukemia (AML) and acute lymphoblastic leukemia (ALL). The antibody is specific to ABL1.

## Lagerung

**Lagerungsbedingungen:**  
Bei -20°C lagern. Nach dem Versand ein Jahr lang stabil  
**Lagerungspuffer:**  
PBS mit 0.02% Natriumazid und 50% Glycerin pH 7.3.  
**Aliquotieren ist nicht notwendig bei -20°C Lagerung**

\*\*\* 20ul-Größen enthalten 0.1% BSA

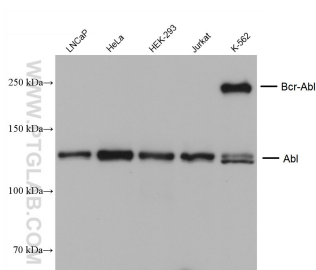
For technical support and original validation data for this product please contact:

T: 1 (888) 4PTGLAB (1-888-478-4522) (toll free  
in USA), or 1(312) 455-8498 (outside USA)

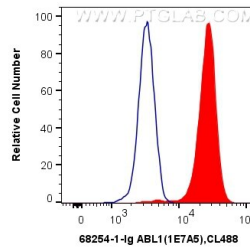
E: proteintech@ptglab.com  
W: ptglab.com

This product is exclusively available under Proteintech Group brand and is not available to purchase from any other manufacturer.

## Ausgewählte Validierungsdaten



Various lysates were subjected to SDS PAGE followed by western blot with 68254-1-Ig (ABL1 antibody) at dilution of 1:5000 incubated at room temperature for 1.5 hours.



$1 \times 10^6$  K-562 cells were intracellularly stained with 0.4  $\mu$ g Anti-Human ABL1 (68254-1-Ig, Clone:1E7A5) and CoraLite®488-Conjugated AffiniPure Goat Anti-Mouse IgG(H+L) at dilution 1:1000 (red), or 0.4  $\mu$ g Mouse IgG2b Isotype Control (66360-3-Ig, Clone: K11B8C4B5) (blue). Cells were fixed with 4% PFA and permeabilized with Flow Cytometry Perm Buffer (PF00011-C).