

Nur für Forschungszwecke

CHCHD3 Monoklonaler Antikörper

Katalog-Nr.: 68259-1-Ig **1 Publikationen**



Allgemeine Informationen

| | | |
|--|--|---|
| Katalog-Nr.: 68259-1-Ig | GenBank-Zugangsnummer: BC014839 | Reinigungsmethode: Protein-A-Reinigung |
| Größe: 150ul, Konzentration: 1000 µg/ml von 54927 Nanodrop; | GeneID (NCBI): 54927 | CloneNo.: 1C8H12 |
| Wirt: Maus | Vollständiger Name: coiled-coil-helix-coiled-coil-helix domain containing 3 | Empfohlene Verdünnungen: WB 1:5000-1:50000 IF 1:400-1:1600 |
| Isotyp: IgG2a | Berechnete Masse: 227 aa, 26 kDa | |
| Immunogen Katalognummer: AG22628 | Beobachtete Masse: 26 kDa | |

Anwendungen

| | |
|---|--|
| Geprüfte Anwendungen: IF, WB, ELISA | Positivkontrollen: |
| In Publikationen genannte Anwendungen: WB | WB: Hausschwein-Herzgewebe, A549-Zellen, HeLa-Zellen, Kaninchenherzgewebe, Mauserzgewebe, Rattenherzgewebe, Rattenhirngewebe |
| Getestete Reaktivität: Hausschwein, Human, Kaninchen, Maus, Ratte | IF: MCF-7-Zellen, |
| Zitierte Arten: Ratte | |

Hintergrundinformationen

CHCHD3, initially identified as a substrate for cAMP-dependent protein kinase (PKA), is a ubiquitous protein in the mitochondria and plays a prominent role in maintaining cristae integrity and mitochondrial function. In mitochondria, ChChd3 is predominantly localized to the inner membrane (IM), facing toward the intermembrane space (IMS), and is part of the large protein complex now called as MINOS (mitochondrial inner membrane organizing system), or MIB (mitochondrial intermembrane space bridging). CHCHD3 is highly conserved in mammals with human and mouse protein sharing 92% sequence similarity.

Bemerkenswerte Veröffentlichungen

| Verfasser | Pubmed ID | Journal | Anwendung |
|-----------|-----------|----------------|-----------|
| Jian Guo | 36819507 | Ann Transl Med | WB |

Lagerung

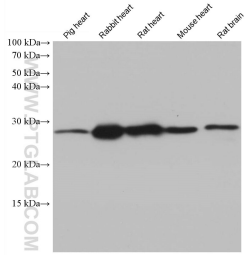
Lagerungsbedingungen:
Bei -20°C lagern. Nach dem Versand ein Jahr lang stabil
Lagerungspuffer:
PBS mit 0.02% Natriumazid und 50% Glycerin pH 7.3.
Aliquotieren ist nicht notwendig bei -20°C Lagerung

***** 20ul-Größen enthalten 0.1% BSA**

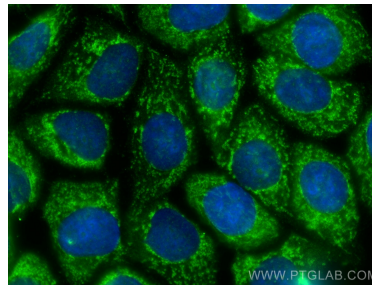
For technical support and original validation data for this product please contact:
T: 1 (888) 4PTGLAB (1-888-478-4522) (toll free in USA), or 1(312) 455-8498 (outside USA)
E: proteintech@ptglab.com
W: ptglab.com

This product is exclusively available under Proteintech Group brand and is not available to purchase from any other manufacturer.

Ausgewählte Validierungsdaten



Various lysates were subjected to SDS PAGE followed by western blot with 68259-1-Ig (CHCHD3 antibody) at dilution of 1:20000 incubated at room temperature for 1.5 hours.



Immunofluorescent analysis of (-20°C Methanol) fixed MCF-7 cells using CHCHD3 antibody (68259-1-Ig, Clone: 1C8H12) at dilution of 1:800 and CoraLite® 488-Conjugated AffiniPure Goat Anti-Mouse IgG(H+L).