

Nur für Forschungszwecke

CARD11 Monoklonaler Antikörper

Katalog-Nr.:68269-1-Ig



Allgemeine Informationen

Katalog-Nr.: 68269-1-Ig	GenBank-Zugangsnummer: BC111719	Reinigungsmethode: Protein-G-Reinigung
Größe: 150ul , Konzentration: 1000 µg/ml von84433 Nanodrop;	GeneID (NCBI): von84433	CloneNo.: 3F5H6
Wirt: Maus	Vollständiger Name: caspase recruitment domain family, member 11	Empfohlene Verdünnungen: WB 1:2000-1:10000
Isotyp: IgG1	Berechnete Masse: 1154 aa, 133 kDa	
Immunogen Katalognummer: AG16468	Beobachtete Masse: 140 kDa	

Anwendungen

Geprüfte Anwendungen:
WB, ELISA

Getestete Reaktivität:
Human

Positivkontrollen:

WB : MOLT-4-Zellen, Jurkat-Zellen, K-562-Zellen, Raji-Zellen

Hintergrundinformationen

CARD11 also named as ,BIMP3 or CARMA1, is a 1154 amino acid protein, which contains one PDZ domain, one guanylate kinase-like domain, and one CARD domain. CARD11 localizes in the cytoplasm and co-localized with DPP4 in membrane raft. CARD11 is detected in adult peripheral blood leukocytes, thymus, spleen and liver. CARD11 also is found in CARD11 promyelocytic leukemia HL-60 cells, chronic myelogenous leukemia K-562 cells, Burkitt's lymphoma Raji cells and colorectal adenocarcinoma SW480 cells. CARD11 is involved in the co-stimulatory signal essential for T-cell receptor mediated T-cell activation.

Lagerung

Lagerungsbedingungen:
Bei -20°C lagern. Nach dem Versand ein Jahr lang stabil

Lagerungspuffer:
PBS mit 0.02% Natriumazid und 50% Glycerin pH 7.3.

Aliquotieren ist nicht notwendig bei -20°C Lagerung

*** 20ul-Größen enthalten 0.1% BSA

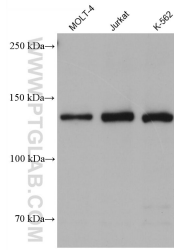
For technical support and original validation data for this product please contact:

T: 1 (888) 4PTGLAB (1-888-478-4522) (toll free
in USA), or 1(312) 455-8498 (outside USA)

E: proteintech@ptglab.com
W: ptglab.com

This product is exclusively available under Proteintech Group brand and is not available to purchase from any other manufacturer.

Ausgewählte Validierungsdaten



Various lysates were subjected to SDS PAGE followed by western blot with 68269-1-Ig (CARD11 antibody) at dilution of 1:5000 incubated at room temperature for 1.5 hours.