

Nur für Forschungszwecke

RPS20 Monoklonaler Antikörper

Katalog-Nr.:68270-1-Ig



Allgemeine Informationen

Katalog-Nr.: 68270-1-Ig	GenBank-Zugangsnummer: BC007507	Reinigungsmethode: Protein-G-Reinigung
Größe: 150ul , Konzentration: 1000 µg/ml von6224 Nanodrop;	GeneID (NCBI): von6224	CloneNo.: 3E9B4
Wirt: Maus	Vollständiger Name: ribosomal protein S20	Empfohlene Verdünnungen: WB 1:5000-1:50000
Isotyp: IgG1	Berechnete Masse: 13 kDa	
Immunogen Katalognummer: AG8275	Beobachtete Masse: 16 kDa	

Anwendungen

Geprüfte Anwendungen:
WB, ELISA
Getestete Reaktivität:
Human

Positivkontrollen:

WB : Jurkat-Zellen, HEK-293-Zellen, HeLa-Zellen, K-562-Zellen, NIH/3T3-Zellen

Hintergrundinformationen

Ribosomes, the organelles that catalyze protein synthesis, consist of a small 40S subunit and a large 60S subunit. Together these subunits are composed of 4 RNA species and approximately 80 structurally distinct proteins. RPS20 is a component of the 40S subunit. The protein belongs to the S10P family of ribosomal proteins. It is located in the cytoplasm.

Lagerung

Lagerungsbedingungen:
Bei -20°C lagern. Nach dem Versand ein Jahr lang stabil
Lagerungspuffer:
PBS mit 0.02% Natriumazid und 50% Glycerin pH 7.3.
Aliquotieren ist nicht notwendig bei -20°C Lagerung

***** 20ul-Größen enthalten 0.1% BSA**

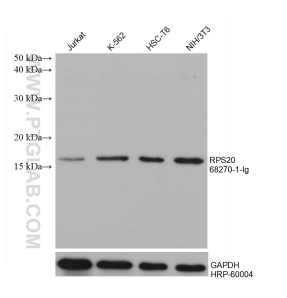
For technical support and original validation data for this product please contact:

T: 1 (888) 4PTGLAB (1-888-478-4522) (toll free in USA), or 1(312) 455-8498 (outside USA)

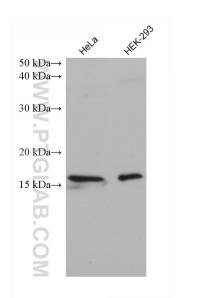
E: proteintech@ptglab.com
W: ptglab.com

This product is exclusively available under Proteintech Group brand and is not available to purchase from any other manufacturer.

Ausgewählte Validierungsdaten



Various lysates were subjected to SDS PAGE followed by western blot with 68270-1-Ig (RPS20 antibody) at dilution of 1:10000 incubated at room temperature for 1.5 hours. The membrane was stripped and reblotted with HRP-conjugated GAPDH Monoclonal antibody (HRP-60004) as loading control.



Various lysates were subjected to SDS PAGE followed by western blot with 68270-1-Ig (RPS20 antibody) at dilution of 1:10000 incubated at room temperature for 1.5 hours.