

Nur für Forschungszwecke

# MAP4 Monoklonaler Antikörper

Katalog-Nr.:68271-1-Ig



## Allgemeine Informationen

<b>Katalog-Nr.:</b> 68271-1-Ig	<b>GenBank-Zugangsnummer:</b> BC012794	<b>Reinigungsmethode:</b> Protein-G-Reinigung
<b>Größe:</b> 150ul , Konzentration: 500 µg/ml von Nanodrop;	<b>GeneID (NCBI):</b> 4134	<b>CloneNo.:</b> 1C1A6
<b>Wirt:</b> Maus	<b>Vollständiger Name:</b> microtubule-associated protein 4	<b>Empfohlene Verdünnungen:</b> WB 1:5000-1:50000 IHC 1:500-1:2000
<b>Isotyp:</b> IgG1	<b>Berechnete Masse:</b> 121 kDa	
<b>Immunogen Katalognummer:</b> AG1741	<b>Beobachtete Masse:</b> 210-240 kDa	

## Anwendungen

### Geprüfte Anwendungen:

IHC, WB, ELISA

### Getestete Reaktivität:

Human

**Hinweis-IHC: Antigendemaskierung mit TE-Puffer pH 9,0 empfohlen. (\*) Wahlweise kann die Antigendemaskierung auch mit Citratpuffer pH 6,0 erfolgen.**

### Positivkontrollen:

WB : NCCIT-Zellen, HEK-293-Zellen, HeLa-Zellen, Jurkat-Zellen, LNCaP-Zellen, MOLT-4-Zellen

IHC : humanes Lungenkarzinomgewebe,

## Hintergrundinformationen

MAP4 is a ubiquitously expressed microtubule-associated protein involved in the organization and stabilization of microtubules during various cellular activities. Recently it has been reported that expression of MAP4 was upregulated in esophageal squamous cell carcinoma (ESCC). MAP4 has been considered as an independent prognostic factor for ESCC. The predicted molecular weight of MAP4 is about 120 kDa, while higher molecular weight around 200-250 kDa is usually observed in WB test, which may be the result of glycosylation. (26876215, 8647865)

## Lagerung

### Lagerungsbedingungen:

Bei -20°C lagern. Nach dem Versand ein Jahr lang stabil

### Lagerungspuffer:

PBS mit 0.02% Natriumazid und 50% Glycerin pH 7.3.

Aliquotieren ist nicht notwendig bei -20°C Lagerung

\*\*\* 20ul-Größen enthalten 0.1% BSA

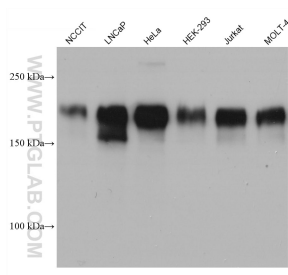
For technical support and original validation data for this product please contact:

T: 1 (888) 4PTGLAB (1-888-478-4522) (toll free in USA), or 1(312) 455-8498 (outside USA)

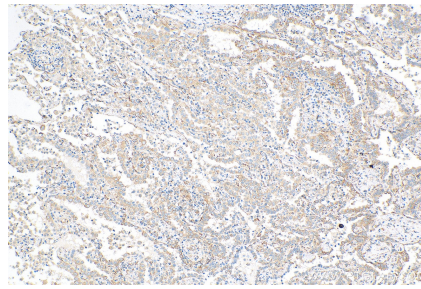
E: proteintech@ptglab.com  
W: ptglab.com

This product is exclusively available under Proteintech Group brand and is not available to purchase from any other manufacturer.

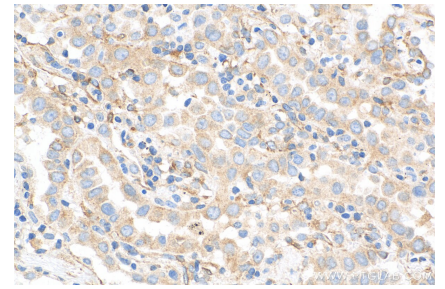
## Ausgewählte Validierungsdaten



Various lysates were subjected to SDS PAGE followed by western blot with 68271-1-Ig (MAP4 antibody) at dilution of 1:20000 incubated at room temperature for 1.5 hours.



Immunohistochemical analysis of paraffin-embedded human lung cancer tissue slide using 68271-1-Ig (MAP4 antibody) at dilution of 1:1000 (under 10x lens). Heat mediated antigen retrieval with Tris-EDTA buffer (pH 9.0).



Immunohistochemical analysis of paraffin-embedded human lung cancer tissue slide using 68271-1-Ig (MAP4 antibody) at dilution of 1:1000 (under 40x lens). Heat mediated antigen retrieval with Tris-EDTA buffer (pH 9.0).