

Nur für Forschungszwecke

CRMP5 Monoklonaler Antikörper

Katalog-Nr.:68272-1-Ig



Allgemeine Informationen

Katalog-Nr.: 68272-1-Ig	GenBank-Zugangsnummer: BC002874	Reinigungsmethode: Protein-A-Reinigung
Größe: 150ul , Konzentration: 1000 µg/ml von56896	GeneID (NCBI): 56896	CloneNo.: 3F2D8
Nanodrop;	Vollständiger Name: dihydropyrimidinase-like 5	Empfohlene Verdünnungen: WB 1:5000-1:50000
Wirt: Maus	Berechnete Masse: 61 kDa	
Isotyp: IgG2a	Beobachtete Masse: 61 kDa	
Immunogen Katalognummer: AG0783		

Anwendungen

Geprüfte Anwendungen: WB, ELISA	Positivkontrollen: WB : Hausschwein-Hirngewebe, Kaninchen-Cerebellum-Gewebe, Ratten-Cerebellum-Gewebe
Getestete Reaktivität: Hausschwein, Human, Kaninchen, Maus, Ratte	

Hintergrundinformationen

Collapsin response mediator proteins (CRMPs) are a family consisting of five homologous cytosolic phosphoproteins (CRMP1-5). All five CRMPs are abundantly expressed in the developing brain and the adult nervous system. CRMP5 is phylogenetically divergent from the other four CRMPs, sharing only 50% homology; this protein plays an important role in modulating filopodial dynamics and, in turn, restricting neuronal growth cone development.

Lagerung

Lagerungsbedingungen:
Bei -20°C lagern. Nach dem Versand ein Jahr lang stabil
Lagerungspuffer:
PBS mit 0.02% Natriumazid und 50% Glycerin pH 7.3.
Aliquotieren ist nicht notwendig bei -20°C Lagerung

***** 20ul-Größen enthalten 0.1% BSA**

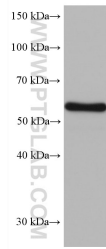
For technical support and original validation data for this product please contact:

T: 1 (888) 4PTGLAB (1-888-478-4522) (toll free in USA), or 1(312) 455-8498 (outside USA)

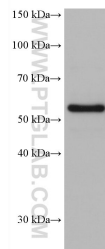
E: proteintech@ptglab.com
W: ptglab.com

This product is exclusively available under Proteintech Group brand and is not available to purchase from any other manufacturer.

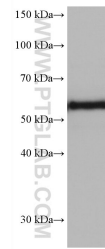
Ausgewählte Validierungsdaten



pig brain tissue were subjected to SDS PAGE followed by western blot with 68272-1-Ig (DPYSL5 antibody) at dilution of 1:20000 incubated at room temperature for 1.5 hours.



rabbit cerebellum tissue were subjected to SDS PAGE followed by western blot with 68272-1-Ig (DPYSL5 antibody) at dilution of 1:20000 incubated at room temperature for 1.5 hours.



rat cerebellum tissue were subjected to SDS PAGE followed by western blot with 68272-1-Ig (CRMP5 antibody) at dilution of 1:20000 incubated at room temperature for 1.5 hours.