

Nur für Forschungszwecke

SERCA3 Monoklonaler Antikörper

Katalog-Nr.:68287-1-Ig



Allgemeine Informationen

| | | |
|--|--|--|
| Katalog-Nr.: 68287-1-Ig | GenBank-Zugangsnummer: BC035729 | Reinigungsmethode: Protein-G-Reinigung |
| Größe: 150ul , Konzentration: 1000 µg/ml von489 Nanodrop; | GeneID (NCBI): 489 | CloneNo.: 1A2C2 |
| Wirt: Maus | Vollständiger Name: ATPase, Ca++ transporting, ubiquitousWB 1:5000-1:50000 | Empfohlene Verdünnungen: |
| Isotyp: IgG1 | Berechnete Masse: 1043 aa, 114 kDa | |
| Immunogen Katalognummer: AG4527 | Beobachtete Masse: 97-110 kDa | |

Anwendungen

Geprüfte Anwendungen:
WB, ELISA

Getestete Reaktivität:
Human, Maus, Ratte

Positivkontrollen:
WB : HepG2-Zellen, HL-60-Zellen, Jurkat-Zellen, K-562-Zellen, Mausherzgewebe, MOLT-4-Zellen, Rattenherzgewebe

Hintergrundinformationen

The SERCA, which pumps cytosolic Ca²⁺ into the ER, is an imperative maintainer of ER Ca²⁺ homeostasis. The mammalian SERCA family is comprised of three tissue-specific members, SERCA1-3. SERCA3 is present in endothelial and epithelial cells of various tissues. SERCA3 helps regulate intracellular Ca²⁺, which is critical for maintaining normal INS secretion and is closely linked to metabolism, neuronal plasticity, gene transcription, cell growth, differentiation, apoptosis, protein folding and carcinogenesis. Several isoforms of SERCA3 exist due to the alternative splicing.

Lagerung

Lagerungsbedingungen:
Bei -20°C lagern. Nach dem Versand ein Jahr lang stabil

Lagerungspuffer:
PBS mit 0.02% Natriumazid und 50% Glycerin pH 7.3.

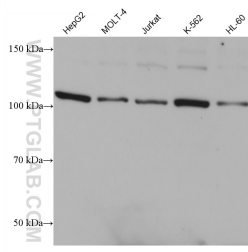
Aliquotieren ist nicht notwendig bei -20°C Lagerung

***** 20ul-Größen enthalten 0.1% BSA**

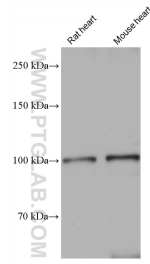
For technical support and original validation data for this product please contact:
T: 1 (888) 4PTGLAB (1-888-478-4522) (toll free in USA), or 1(312) 455-8498 (outside USA) E: proteintech@ptglab.com W: ptglab.com

This product is exclusively available under Proteintech Group brand and is not available to purchase from any other manufacturer.

Ausgewählte Validierungsdaten



Various lysates were subjected to SDS PAGE followed by western blot with 68287-1-Ig (ATP2A3 antibody) at dilution of 1:10000 incubated at room temperature for 1.5 hours.



Various lysates were subjected to SDS PAGE followed by western blot with 68287-1-Ig (ATP2A3 antibody) at dilution of 1:10000 incubated at room temperature for 1.5 hours.