

Nur für Forschungszwecke

Cytokeratin 7 Monoklonaler Antikörper

Katalog-Nr.:68296-1-Ig



Allgemeine Informationen

Katalog-Nr.: 68296-1-Ig	GenBank-Zugangsnummer: BC002700	Reinigungsmethode: Protein-G-Reinigung
Größe: 150ul , Konzentration: 1000 µg/ml von3855 Nanodrop und 667 µg/ml durch die Bradford-Methode mit BSA als Standard;	GeneID (NCBI): 3855	CloneNo.: 3G2H1
Wirt: Maus	Vollständiger Name: keratin 7	Empfohlene Verdünnungen: WB 1:5000-1:50000 IHC 1:4150-1:16600
Isotyp: IgG1	Berechnete Masse: 469 aa, 51 kDa	
Immunogen Katalognummer: AG7895		

Anwendungen

Geprüfte Anwendungen:

IHC, WB, ELISA

Getestete Reaktivität:

Human

Hinweis-IHC: Antigenmaskierung mit TE-Puffer pH 9,0 empfohlen. (*) Wahlweise kann die Antigenmaskierung auch mit Citratpuffer pH 6,0 erfolgen.

Positivkontrollen:

WB : EC109-Zellen, A431-Zellen, A549-Zellen, BxPC-3-Zellen, HaCaT-Zellen, HeLa-Zellen, T-47D-Zellen

IHC : humanes Lungenkarzinomgewebe, humanes Endometriumkarzinomgewebe, humanes Ovarialkarzinomgewebe, humanes Pankreaskarzinomgewebe

Hintergrundinformationen

Keratins are a large family of proteins that form the intermediate filament cytoskeleton of epithelial cells, which are classified into two major sequence types. Type I keratins are a group of acidic intermediate filament proteins, including K9-K23, and the hair keratins Ha1-Ha8. Type II keratins are the basic or neutral counterparts to the acidic type I keratins, including K1-K8, and the hair keratins, Hb1-Hb6. KRT7, also named cytokeratin 7, is one member of type II basic cytokeratin. It is specifically expressed in the simple epithelia lining the cavities of the internal organs and in the gland ducts and blood vessels, and their neoplasms. KRT7 is a marker of epithelial tissues, but not present in carcinomas of stratified squamous cell origin.

Lagerung

Lagerungsbedingungen:

Bei -20°C lagern. Nach dem Versand ein Jahr lang stabil

Lagerungspuffer:

PBS mit 0.02% Natriumazid und 50% Glycerin pH 7.3.

Aliquotieren ist nicht notwendig bei -20°C Lagerung

*** 20ul-Größen enthalten 0.1% BSA

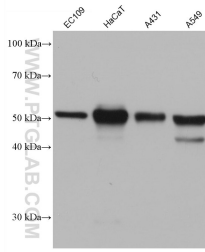
For technical support and original validation data for this product please contact:

T: 1 (888) 4PTGLAB (1-888-478-4522) (toll free in USA), or 1(312) 455-8498 (outside USA)

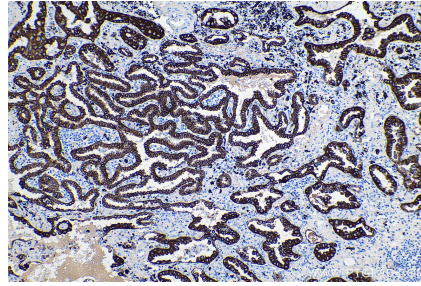
E: proteintech@ptglab.com
W: ptglab.com

This product is exclusively available under Proteintech Group brand and is not available to purchase from any other manufacturer.

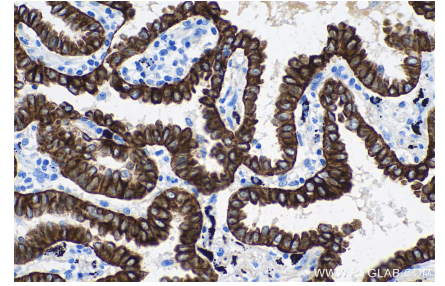
Ausgewählte Validierungsdaten



Various lysates were subjected to SDS PAGE followed by western blot with 68296-1-Ig (Cytokeratin 7 antibody) at dilution of 1:20000 incubated at room temperature for 1.5 hours.



Immunohistochemical analysis of paraffin-embedded human lung cancer tissue slide using 68296-1-Ig (Cytokeratin 7 antibody) at dilution of 1:8300 (under 10x lens). Heat mediated antigen retrieval with Tris-EDTA buffer (pH 9.0).



Immunohistochemical analysis of paraffin-embedded human lung cancer tissue slide using 68296-1-Ig (Cytokeratin 7 antibody) at dilution of 1:8300 (under 40x lens). Heat mediated antigen retrieval with Tris-EDTA buffer (pH 9.0).