

Nur für Forschungszwecke

DLAT Monoklonaler Antikörper

Katalog-Nr.:68303-1-Ig



Allgemeine Informationen

Katalog-Nr.: 68303-1-Ig	GenBank-Zugangsnummer: BC039084	Reinigungsmethode: Protein-A-Reinigung
Größe: 150ul, Konzentration: 500 µg/ml von Nanodrop;	GeneID (NCBI): 1737	CloneNo.: 1F2B9
Wirt: Maus	Vollständiger Name: dihydroliipoamide S-acetyltransferase	Empfohlene Verdünnungen: WB 1:5000-1:50000 IHC 1:500-1:2000 IF 1:1500-1:6000
Isotyp: IgG2b	Berechnete Masse: 647 aa, 70 kDa	
Immunogen Katalognummer: AG4226	Beobachtete Masse: 69-70 kDa	

Anwendungen

Geprüfte Anwendungen:

IF, IHC, WB, ELISA

Getestete Reaktivität:

Human, Maus, Ratte

Hinweis-IHC: Antigenmaskierung mit TE-Puffer pH 9,0 empfohlen. (*) Wahlweise kann die Antigenmaskierung auch mit Citratpuffer pH 6,0 erfolgen.

Positivkontrollen:

WB: HCT 116-Zellen, HeLa-Zellen, HepG2-Zellen, Jurkat-Zellen, K-562-Zellen, LNCaP-Zellen, Maushirngewebe, Rattenhirngewebe

IHC: humanes Leberkarzinomgewebe, Mausnierengewebe

IF: HepG2-Zellen,

Hintergrundinformationen

Lagerung

Lagerungsbedingungen:

Bei -20°C lagern. Nach dem Versand ein Jahr lang stabil

Lagerungspuffer:

PBS mit 0.02% Natriumazid und 50% Glycerin pH 7.3.

Aliquotieren ist nicht notwendig bei -20°C Lagerung

*** 20ul-Größen enthalten 0.1% BSA

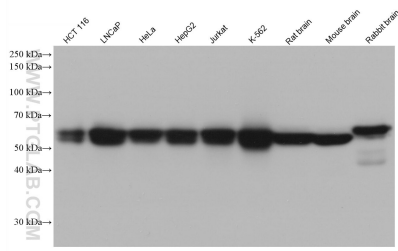
For technical support and original validation data for this product please contact:

T: 1 (888) 4PTGLAB (1-888-478-4522) (toll free in USA), or 1(312) 455-8498 (outside USA)

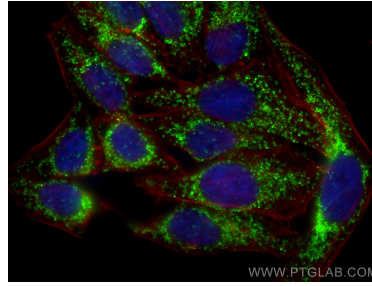
E: proteintech@ptglab.com
W: ptglab.com

This product is exclusively available under Proteintech Group brand and is not available to purchase from any other manufacturer.

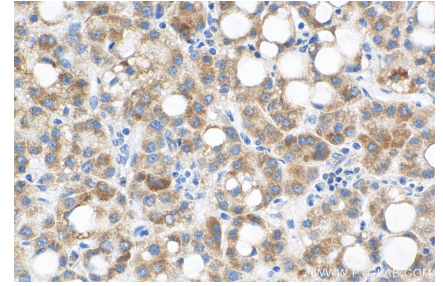
Ausgewählte Validierungsdaten



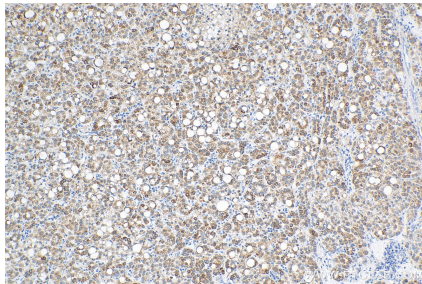
Various lysates were subjected to SDS PAGE followed by western blot with 68303-1-Ig (DLAT antibody) at dilution of 1:20000 incubated at room temperature for 1.5 hours.



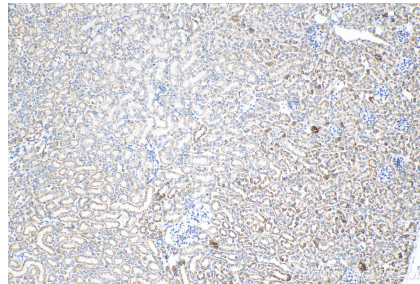
Immunofluorescent analysis of (4% PFA) fixed HepG2 cells using DLAT antibody (68303-1-Ig, Clone: 1F2B9) at dilution of 1:3000 and CoraLite®488-Conjugated AffiniPure Goat Anti-Mouse IgG(H+L), CL594-Phalloidin (red).



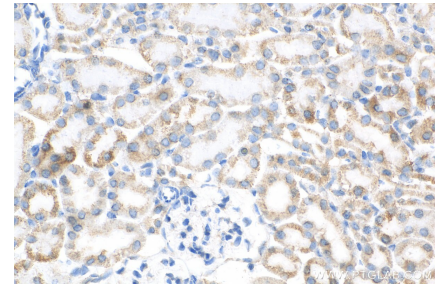
Immunohistochemical analysis of paraffin-embedded human liver cancer tissue slide using 68303-1-Ig (DLAT antibody) at dilution of 1:1000 (under 40x lens). Heat mediated antigen retrieval with Tris-EDTA buffer (pH 9.0).



Immunohistochemical analysis of paraffin-embedded human liver cancer tissue slide using 68303-1-Ig (DLAT antibody) at dilution of 1:1000 (under 10x lens). Heat mediated antigen retrieval with Tris-EDTA buffer (pH 9.0).



Immunohistochemical analysis of paraffin-embedded mouse kidney tissue slide using 68303-1-Ig (DLAT antibody) at dilution of 1:1000 (under 10x lens). Heat mediated antigen retrieval with Tris-EDTA buffer (pH 9.0).



Immunohistochemical analysis of paraffin-embedded mouse kidney tissue slide using 68303-1-Ig (DLAT antibody) at dilution of 1:1000 (under 40x lens). Heat mediated antigen retrieval with Tris-EDTA buffer (pH 9.0).