

Nur für Forschungszwecke

# EXOSC10 Monoklonaler Antikörper

Katalog-Nr.:68315-1-Ig



## Allgemeine Informationen

<b>Katalog-Nr.:</b> 68315-1-Ig	<b>GenBank-Zugangsnummer:</b> BC039901	<b>Reinigungsmethode:</b> Protein-G-Reinigung
<b>Größe:</b> 150ul , Konzentration: 1000 µg/ml von5394	<b>GeneID (NCBI):</b> 5394	<b>CloneNo.:</b> 1D6G9
<b>Nanodrop;</b>	<b>Vollständiger Name:</b> exosome component 10	<b>Empfohlene Verdünnungen:</b> WB 1:5000-1:50000
<b>Wirt:</b> Maus	<b>Berechnete Masse:</b> 98 kDa	
<b>Isotyp:</b> IgG1	<b>Beobachtete Masse:</b> 98 kDa	
<b>Immunogen Katalognummer:</b> AG28587		

## Anwendungen

<b>Geprüfte Anwendungen:</b> WB, ELISA	<b>Positivkontrollen:</b> WB : LNCaP-Zellen, HeLa-Zellen, HepG2-Zellen, Jurkat-Zellen, K-562-Zellen
<b>Getestete Reaktivität:</b> Human	

## Hintergrundinformationen

About 50% of patients with polymyositis/scleroderma (PM-Scl) overlap syndrome are reported to have autoantibodies to a nuclear/nucleolar particle termed PM-Scl. Exosome component 10 (EXOSC10), also named autoantigen PM/Scl 2, is the 100 kDa antigen component of PM-Scl and is recognized by most sera of PM-Scl patients. EXOSC10 is strongly enriched in the nucleolus and a small amount has been found in cytoplasm supporting the existence of a nucleolar RNA exosome complex form. As a putative catalytic component of the RNA exosome complex which has 3'->5' exoribonuclease activity, EXOSC10 participates in a multitude of cellular RNA processing and degradation events.

## Lagerung

**Lagerungsbedingungen:**  
Bei -20°C lagern. Nach dem Versand ein Jahr lang stabil

**Lagerungspuffer:**  
PBS mit 0.02% Natriumazid und 50% Glycerin pH 7.3.

Aliquotieren ist nicht notwendig bei -20°C Lagerung

\*\*\* 20ul-Größen enthalten 0.1% BSA

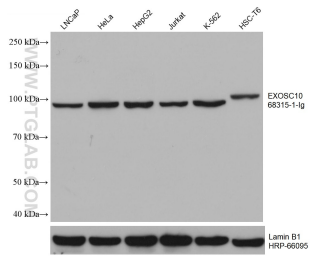
For technical support and original validation data for this product please contact:

T: 1 (888) 4PTGLAB (1-888-478-4522) (toll free in USA), or 1(312) 455-8498 (outside USA)

E: [proteintech@ptglab.com](mailto:proteintech@ptglab.com)  
W: [ptglab.com](http://ptglab.com)

This product is exclusively available under Proteintech Group brand and is not available to purchase from any other manufacturer.

## Ausgewählte Validierungsdaten



Various lysates were subjected to SDS PAGE followed by western blot with 68315-1-Ig (EXOSC10 antibody) at dilution of 1:10000 incubated at room temperature for 1.5 hours. The membrane was stripped and reblotted with HRP-conjugated Lamin B1 Monoclonal antibody (HRP-66095) as loading control.