

Allgemeine Informationen

Katalog-Nr.: 68321-1-Ig	GenBank-Zugangsnummer: BC017477	Reinigungsmethode: Protein-A-Reinigung
Größe: 150ul , Konzentration: 1000 µg/ml von25902 Nanodrop;	GeneID (NCBI): von25902	CloneNo.: 1G1F2
Wirt: Maus	Vollständiger Name: methylenetetrahydrofolate dehydrogenase (NADP+ dependent) 1-IHC 1:250-1:1000 like	Empfohlene Verdünnungen: WB 1:5000-1:50000
Isotyp: IgG2b	Berechnete Masse: 978 aa, 106 kDa	
Immunogen Katalognummer: AG9061	Beobachtete Masse: 106 kDa	

Anwendungen

Geprüfte Anwendungen:

IHC, WB, ELISA

Getestete Reaktivität:

Human, Kaninchen, Ratte

Hinweis-IHC: Antigendemaskierung mit TE-Puffer pH 9,0 empfohlen. (*) Wahlweise kann die Antigendemaskierung auch mit Citratpuffer pH 6,0 erfolgen.

Positivkontrollen:

WB : U2OS-Zellen, HEK-293-Zellen, HeLa-Zellen, HepG2-Zellen, Kaninchenhodengewebe, LNCaP-Zellen, Rattenhodengewebe

IHC : Mauslebergewebe,

Hintergrundinformationen

MTHFD1L(Monofunctional C1-tetrahydrofolate synthase, mitochondrial) is also named as FTHFSDC1(Formyltetrahydrofolate synthetase). MTHFD1L enzyme is present in mitochondria from normal embryonic tissues and embryonic fibroblast cell lines, and embryonic mitochondria possess the ability to synthesize formate from glycine. It catalyzes the final step in the mitochondrial conversion of 1-C units to formate in embryos. Moreover, MTHFD1L levels were substantially higher in embryonic mitochondria than in adult liver mitochondria and embryonic mitochondria exhibited greater formate production(PMID:19948730). It has 2 isoforms produced by alternative splicing.

Lagerung

Lagerungsbedingungen:

Bei -20°C lagern. Nach dem Versand ein Jahr lang stabil

Lagerungspuffer:

PBS mit 0.02% Natriumazid und 50% Glycerin pH 7.3.

Aliquotieren ist nicht notwendig bei -20°C Lagerung

***** 20ul-Größen enthalten 0.1% BSA**

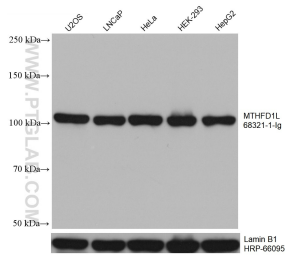
For technical support and original validation data for this product please contact:

T: 1 (888) 4PTGLAB (1-888-478-4522) (toll free in USA), or 1(312) 455-8498 (outside USA)

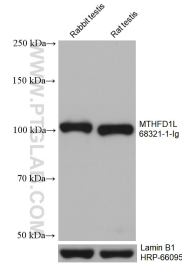
E: proteintech@ptglab.com
W: ptglab.com

This product is exclusively available under Proteintech Group brand and is not available to purchase from any other manufacturer.

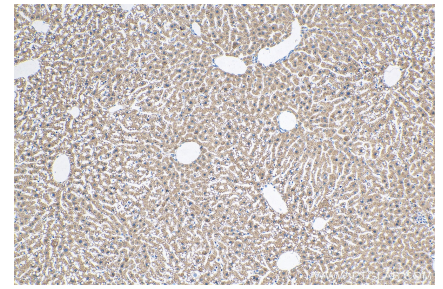
Ausgewählte Validierungsdaten



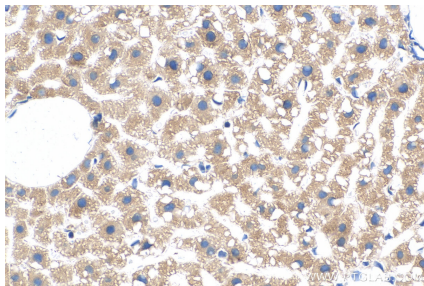
Various lysates were subjected to SDS PAGE followed by western blot with 68321-1-Ig (MTHFD1L antibody) at dilution of 1:10000 incubated at room temperature for 1.5 hours. The membrane was stripped and reblotted with HRP-conjugated Lamin B1 Monoclonal antibody (HRP-66095) as loading control.



Various lysates were subjected to SDS PAGE followed by western blot with 68321-1-Ig (MTHFD1L antibody) at dilution of 1:10000 incubated at room temperature for 1.5 hours. The membrane was stripped and reblotted with HRP-conjugated Lamin B1 Monoclonal antibody (HRP-66095) as loading control.



Immunohistochemical analysis of paraffin-embedded mouse liver tissue slide using 68321-1-Ig (MTHFD1L antibody) at dilution of 1:500 (under 10x lens). Heat mediated antigen retrieval with Tris-EDTA buffer (pH 9.0).



Immunohistochemical analysis of paraffin-embedded mouse liver tissue slide using 68321-1-Ig (MTHFD1L antibody) at dilution of 1:500 (under 40x lens). Heat mediated antigen retrieval with Tris-EDTA buffer (pH 9.0).