

Nur für Forschungszwecke

# LRRC8C Monoklonaler Antikörper

Katalog-Nr.:68323-1-Ig



## Allgemeine Informationen

<b>Katalog-Nr.:</b> 68323-1-Ig	<b>GenBank-Zugangsnummer:</b> BC113973	<b>Reinigungsmethode:</b> Protein-A-Reinigung
<b>Größe:</b> 150ul , Konzentration: 1000 µg/ml von84230 Nanodrop;	<b>GeneID (NCBI):</b> von84230	<b>CloneNo.:</b> 4A6A4
<b>Wirt:</b> Maus	<b>Vollständiger Name:</b> leucine rich repeat containing 8 family, member C	<b>Empfohlene Verdünnungen:</b> WB 1:2000-1:10000
<b>Isotyp:</b> IgG2b	<b>Berechnete Masse:</b> 803 aa, 92 kDa	
<b>Immunogen Katalognummer:</b> AG17001	<b>Beobachtete Masse:</b> 105 kDa	

## Anwendungen

<b>Geprüfte Anwendungen:</b> WB, ELISA	<b>Positivkontrollen:</b> WB : HeLa-Zellen, U2OS-Zellen
<b>Getestete Reaktivität:</b> Human	

## Hintergrundinformationen

LRRC8C (Leucine-rich repeat-containing protein 8C), also known as AD158, is a non-essential component of the volume-regulated anion channel (VRAC, also known as VSOAC channel), which is required to maintain a constant cell volume in response to extracellular or intracellular permeability changes. The VRAC channel conducts iodide better than chloride and can also conduct organic osmolytes like taurine. The VRAC channel also mediates transport of immunoreactive cyclic dinucleotide GMP-AMP (2'-3'-cGAMP), an immune messenger produced in response to DNA virus in the cytosol (PMID:24790029; 26824658; 28193731).

## Lagerung

**Lagerungsbedingungen:**  
Bei -20°C lagern. Nach dem Versand ein Jahr lang stabil  
**Lagerungspuffer:**  
PBS mit 0.02% Natriumazid und 50% Glycerin pH 7.3.  
Aliquotieren ist nicht notwendig bei -20°C Lagerung

\*\*\* 20ul-Größen enthalten 0.1% BSA

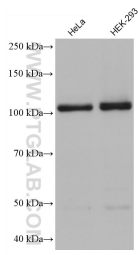
For technical support and original validation data for this product please contact:

T: 1 (888) 4PTGLAB (1-888-478-4522) (toll free  
in USA), or 1(312) 455-8498 (outside USA)

E: proteintech@ptglab.com  
W: ptglab.com

This product is exclusively available under Proteintech Group brand and is not available to purchase from any other manufacturer.

## Ausgewählte Validierungsdaten



Various lysates were subjected to SDS PAGE followed by western blot with 68323-1-Ig (LRRC8C antibody) at dilution of 1:5000 incubated at room temperature for 1.5 hours.