

Nur für Forschungszwecke

# SH3GLB2 Monoklonaler Antikörper

Katalog-Nr.:68325-1-Ig



## Allgemeine Informationen

|  |  |   |
|--|--|---|
| <b>Katalog-Nr.:</b><br>68325-1-Ig  | <b>GenBank-Zugangsnummer:</b><br>BC014635                        | <b>Reinigungsmethode:</b><br>Protein-G-Reinigung  |
| <b>Größe:</b><br>150ul , Konzentration: 1000 µg/ml von56904<br>Nanodrop; | <b>GeneID (NCBI):</b><br>56904                                   | <b>CloneNo.:</b><br>4B1A10  |
| <b>Wirt:</b><br>Maus   | <b>Vollständiger Name:</b><br>SH3-domain GRB2-like endophilin B2 | <b>Empfohlene Verdünnungen:</b><br>WB 1:5000-1:50000<br>IHC 1:500-1:2000<br>IF 1:500-1:2000 |
| <b>Isotyp:</b><br>IgG1   | <b>Berechnete Masse:</b><br>395 aa, 44 kDa                       |   |
| <b>Immunogen Katalognummer:</b><br>AG8932                                | <b>Beobachtete Masse:</b><br>47-50 kDa                           |   |

## Anwendungen

### Geprüfte Anwendungen:

IF, IHC, WB, ELISA

### Getestete Reaktivität:

Hausschwein, Human, Kaninchen, Maus, Ratte

**Hinweis-IHC: Antigendemaskierung mit TE-Puffer pH 9,0 empfohlen. (\*) Wahlweise kann die Antigendemaskierung auch mit Citratpuffer pH 6,0 erfolgen.**

### Positivkontrollen:

**WB:** LNCaP-Zellen, Hausschwein-Hirngewebe, HEK-293-Zellen, HeLa-Zellen, Jurkat-Zellen, K-562-Zellen, Kaninchenhirngewebe, Maushirngewebe, Rattenhirngewebe

**IHC:** Maushodengewebe,

**IF:** HeLa-Zellen,

## Hintergrundinformationen

SH3GLB2 is an endophilin-related protein family with 395-amino acid protein and contains an N-terminal domain, a central coiled-coil region, and a C-terminal SH3 domain. SH3GLB2 is expressed in many tissues, including skeletal muscle, adipocytes, brain, lung, colon, and mammary gland. SH3GLB2 was expressed in the cytoplasm of transfected HeLa cells and was excluded from nuclei(PMID: 11161816).

## Lagerung

### Lagerungsbedingungen:

Bei -20°C lagern. Nach dem Versand ein Jahr lang stabil

### Lagerungspuffer:

PBS mit 0.02% Natriumazid und 50% Glycerin pH 7.3.

Aliquotieren ist nicht notwendig bei -20°C Lagerung

**\*\*\* 20ul-Größen enthalten 0.1% BSA**

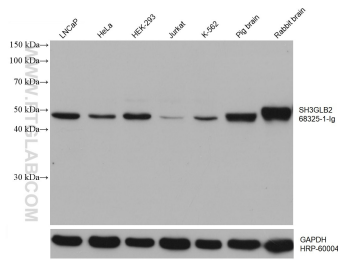
For technical support and original validation data for this product please contact:

T: 1 (888) 4PTGLAB (1-888-478-4522) (toll free in USA), or 1(312) 455-8498 (outside USA)

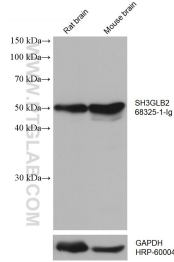
E: proteintech@ptglab.com  
W: ptglab.com

**This product is exclusively available under Proteintech Group brand and is not available to purchase from any other manufacturer.**

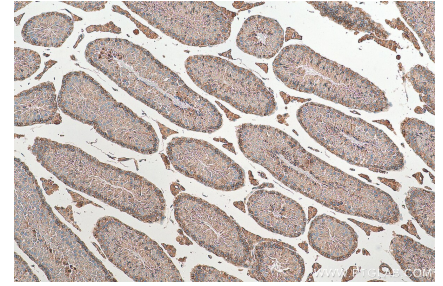
## Ausgewählte Validierungsdaten



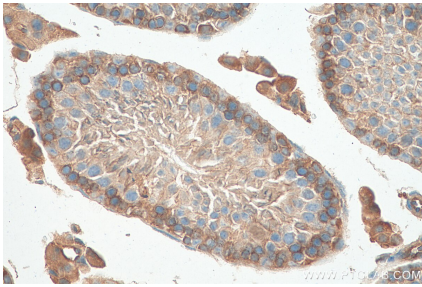
Various lysates were subjected to SDS PAGE followed by western blot with 68325-1-Ig (SH3GLB2 antibody) at dilution of 1:10000 incubated at room temperature for 1.5 hours. The membrane was stripped and reblotted with HRP-conjugated GAPDH Monoclonal antibody (HRP-60004) as loading control.



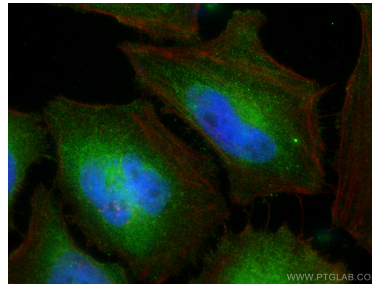
Various lysates were subjected to SDS PAGE followed by western blot with 68325-1-Ig (SH3GLB2 antibody) at dilution of 1:10000 incubated at room temperature for 1.5 hours. The membrane was stripped and reblotted with HRP-conjugated GAPDH Monoclonal antibody (HRP-60004) as loading control.



Immunohistochemical analysis of paraffin-embedded mouse testis tissue slide using 68325-1-Ig (SH3GLB2 antibody) at dilution of 1:1000 (under 10x lens). Heat mediated antigen retrieval with Tris-EDTA buffer (pH 9.0).



Immunohistochemical analysis of paraffin-embedded mouse testis tissue slide using 68325-1-Ig (SH3GLB2 antibody) at dilution of 1:1000 (under 40x lens). Heat mediated antigen retrieval with Tris-EDTA buffer (pH 9.0).



Immunofluorescent analysis of (4% PFA) fixed HeLa cells using SH3GLB2 antibody (68325-1-Ig, Clone: 4B1A10) at dilution of 1:1000 and Coralite® 488-Conjugated AffiniPure Goat Anti-Mouse IgG(H+L), CL594-Phalloidin (red).