

Nur für Forschungszwecke

NDUFS6 Monoklonaler Antikörper

Katalog-Nr.:68329-1-Ig



Allgemeine Informationen

Katalog-Nr.: 68329-1-Ig	GenBank-Zugangsnummer: BC046155	Reinigungsmethode: Protein-G-Reinigung
Größe: 150ul, Konzentration: 1000 µg/ml von4726 Nanodrop;	GeneID (NCBI): 4726	CloneNo.: 2F4H3
Wirt: Maus	Vollständiger Name: NADH dehydrogenase (ubiquinone) Fe-S protein 6, 13kDa (NADH- coenzyme Q reductase)	Empfohlene Verdünnungen: WB 1:5000-1:50000 IHC 1:500-1:2000
Isotyp: IgG1	Berechnete Masse: 14 kDa	
Immunogen Katalognummer: AG6286	Beobachtete Masse: 13-15 kDa	

Anwendungen

Geprüfte Anwendungen: IHC, WB, ELISA	Positivkontrollen:
Getestete Reaktivität: Huhn, Human, Kaninchen, Maus, Ratte	WB: Kaninchenherzgewebe, HepG2-Zellen, Mausherzgewebe, Rattenherzgewebe
Hinweis-IHC: Antigendemaskierung mit TE-Puffer pH 9,0 empfohlen. (*) Wahlweise kann die Antigendemaskierung auch mit Citratpuffer pH 6,0 erfolgen.	IHC: humanes Prostatakarzinomgewebe,

Hintergrundinformationen

NDUFS6(NADH dehydrogenase [ubiquinone] iron-sulfur protein 6, mitochondrial) is also named as CI-13kD-A, NADH-ubiquinone oxidoreductase 13 kDa-A subunit and belongs to the complex I NDUFS6 subunit family.It is an accessory subunit of the mitochondrial membrane respiratory chain NADH dehydrogenase (Complex I), that is believed not to be involved in catalysis.

Lagerung

Lagerungsbedingungen:
Bei -20°C lagern. Nach dem Versand ein Jahr lang stabil
Lagerungspuffer:
PBS mit 0.02% Natriumazid und 50% Glycerin pH 7.3.
Aliquotieren ist nicht notwendig bei -20°C Lagerung

*** 20ul-Größen enthalten 0.1% BSA

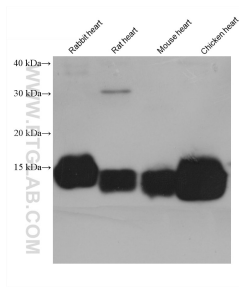
For technical support and original validation data for this product please contact:

T: 1 (888) 4PTGLAB (1-888-478-4522) (toll free
in USA), or 1(312) 455-8498 (outside USA)

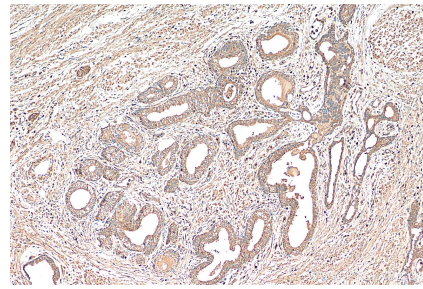
E: proteintech@ptglab.com
W: ptglab.com

This product is exclusively available under Proteintech Group brand and is not available to purchase from any other manufacturer.

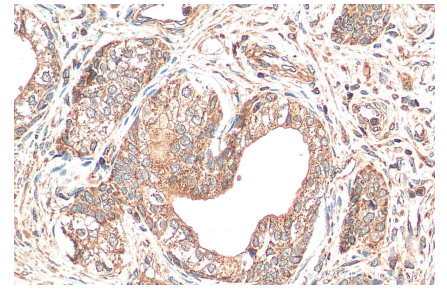
Ausgewählte Validierungsdaten



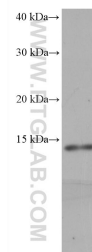
rabbit heart tissue were subjected to SDS PAGE followed by western blot with 68329-1-Ig (NDUFS6 antibody) at dilution of 1:20000 incubated at room temperature for 1.5 hours.



Immunohistochemical analysis of paraffin-embedded human prostate cancer tissue slide using 68329-1-Ig (NDUFS6 antibody) at dilution of 1:1000 (under 10x lens). Heat mediated antigen retrieval with Tris-EDTA buffer (pH 9.0).



Immunohistochemical analysis of paraffin-embedded human prostate cancer tissue slide using 68329-1-Ig (NDUFS6 antibody) at dilution of 1:1000 (under 40x lens). Heat mediated antigen retrieval with Tris-EDTA buffer (pH 9.0).



HepG2 cells were subjected to SDS PAGE followed by western blot with 68329-1-Ig (NDUFS6 antibody) at dilution of 1:20000 incubated at room temperature for 1.5 hours.