

Nur für Forschungszwecke

# EPS8L2 Monoklonaler Antikörper

Katalog-Nr.: 68330-1-Ig



## Allgemeine Informationen

|   |  |   |
|---|--|---|
| <b>Katalog-Nr.:</b><br>68330-1-Ig                           | <b>GenBank-Zugangsnummer:</b><br>BC002474  | <b>Reinigungsmethode:</b><br>Protein-A-Reinigung                        |
| <b>Größe:</b><br>150ul, Konzentration: 1000 µg/ml von 64787 | <b>GeneID (NCBI):</b><br>von 64787         | <b>CloneNo.:</b><br>2E3B1   |
| <b>Nanodrop;</b>  | <b>Vollständiger Name:</b><br>EPS8-like 2  | <b>Empfohlene Verdünnungen:</b><br>WB 1:5000-1:50000<br>IF 1:250-1:1000 |
| <b>Wirt:</b><br>Maus  | <b>Berechnete Masse:</b><br>715 aa, 81 kDa |   |
| <b>Isotyp:</b><br>IgG1                                      | <b>Beobachtete Masse:</b><br>81 kDa        |   |
| <b>Immunogen Katalognummer:</b><br>AG16808                  |  |   |

## Anwendungen

**Geprüfte Anwendungen:**  
IF, WB, ELISA

**Getestete Reaktivität:**  
Human, Maus, Ratte

### Positivkontrollen:

**WB:** Rattenhautgewebe, A431-Zellen, A549-Zellen, HeLa-Zellen, HepG2-Zellen, LNCaP-Zellen, Maushautgewebe

**IF:** HeLa-Zellen,

## Hintergrundinformationen

EPS8L2 (epidermal growth factor receptor pathway substrate 8 L2), a member of the Eps8-like protein family, is a newly identified hair bundle protein that is localized at the tips of stereocilia of both cochlear and vestibular hair cells.

## Lagerung

**Lagerungsbedingungen:**  
Bei -20°C lagern. Nach dem Versand ein Jahr lang stabil

**Lagerungspuffer:**  
PBS mit 0.02% Natriumazid und 50% Glycerin pH 7.3.

**Aliquotieren ist nicht notwendig bei -20°C Lagerung**

**\*\*\* 20ul-Größen enthalten 0.1% BSA**

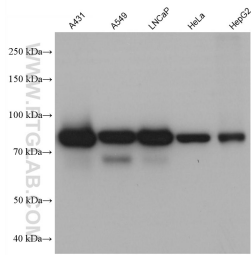
For technical support and original validation data for this product please contact:

T: 1 (888) 4PTGLAB (1-888-478-4522) (toll free in USA), or 1(312) 455-8498 (outside USA)

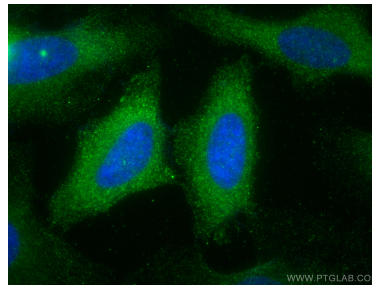
E: [proteintech@ptglab.com](mailto:proteintech@ptglab.com)  
W: [ptglab.com](http://ptglab.com)

**This product is exclusively available under Proteintech Group brand and is not available to purchase from any other manufacturer.**

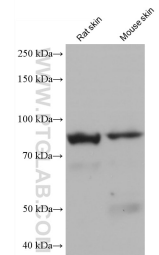
## Ausgewählte Validierungsdaten



A431 cells were subjected to SDS PAGE followed by western blot with 68330-1-Ig (EPS8L2 antibody) at dilution of 1:10000 incubated at room temperature for 1.5 hours.



Immunofluorescent analysis of (-20°C Methanol) fixed HeLa cells using EPS8L2 antibody (68330-1-Ig, Clone: 2E3B1) at dilution of 1:500 and CoraLite®488-Conjugated AffiniPure Goat Anti-Mouse IgG(H+L).



rat skin tissue were subjected to SDS PAGE followed by western blot with 68330-1-Ig (EPS8L2 antibody) at dilution of 1:10000 incubated at room temperature for 1.5 hours.