

Nur für Forschungszwecke

ALAS2 Monoklonaler Antikörper

Katalog-Nr.:68332-1-Ig



Allgemeine Informationen

Katalog-Nr.: 68332-1-Ig	GenBank-Zugangsnummer: BC030230	Reinigungsmethode: Protein-G-Reinigung
Größe: 150ul , Konzentration: 1000 µg/ml von212 Nanodrop;	GeneID (NCBI): 212	CloneNo.: 2C1H1
Wirt: Maus	Vollständiger Name: aminolevulinate, delta-, synthase 2	Empfohlene Verdünnungen: WB 1:5000-1:50000
Isotyp: IgG1	Berechnete Masse: 587 aa, 65 kDa	
Immunogen Katalognummer: AG13524	Beobachtete Masse: 60-65 kDa	

Anwendungen

Geprüfte Anwendungen:
WB, ELISA

Getestete Reaktivität:
Human

Positivkontrollen:

WB : THP-1-Zellen, Daudi-Zellen, HEK-293-Zellen, K-562-Zellen, MOLT-4-Zellen, Raji-Zellen

Hintergrundinformationen

The heme biosynthetic pathway begins from delta aminolevulinic acid synthase (ALAS) catalyzing the condensation of glycine and succinyl-CoA to delta aminolevulinic acid (ALA) in the mitochondria. ALAS is coded by two genes: ALAS1 and ALAS2 . ALAS1 is ubiquitously expressed in all cells, and the negative feedback is regulated by the heme pool; however, ALAS2 is specifically expressed only in erythroid cells.

Lagerung

Lagerungsbedingungen:
Bei -20°C lagern. Nach dem Versand ein Jahr lang stabil

Lagerungspuffer:
PBS mit 0.02% Natriumazid und 50% Glycerin pH 7.3.

Aliquotieren ist nicht notwendig bei -20°C Lagerung

*** 20ul-Größen enthalten 0.1% BSA

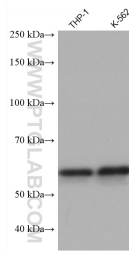
For technical support and original validation data for this product please contact:

T: 1 (888) 4PTGLAB (1-888-478-4522) (toll free in USA), or 1(312) 455-8498 (outside USA)

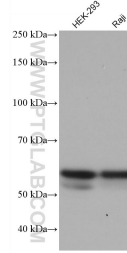
E: proteintech@ptglab.com
W: ptglab.com

This product is exclusively available under Proteintech Group brand and is not available to purchase from any other manufacturer.

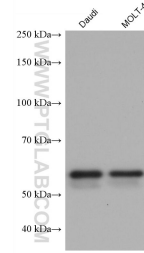
Ausgewählte Validierungsdaten



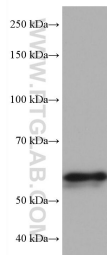
Various lysates were subjected to SDS PAGE followed by western blot with 68332-1-Ig (ALAS2 antibody) at dilution of 1:10000 incubated at room temperature for 1.5 hours.



Various lysates were subjected to SDS PAGE followed by western blot with 68332-1-Ig (ALAS2 antibody) at dilution of 1:10000 incubated at room temperature for 1.5 hours.



Various lysates were subjected to SDS PAGE followed by western blot with 68332-1-Ig (ALAS2 antibody) at dilution of 1:10000 incubated at room temperature for 1.5 hours.



NK-92 cells were subjected to SDS PAGE followed by western blot with 68332-1-Ig (ALAS2 antibody) at dilution of 1:10000 incubated at room temperature for 1.5 hours.