

Nur für Forschungszwecke

ATPAF2 Monoklonaler Antikörper

Katalog-Nr.:68351-1-Ig



Allgemeine Informationen

Katalog-Nr.: 68351-1-Ig	GenBank-Zugangsnummer: BC032126	Reinigungsmethode: Protein-G-Reinigung
Größe: 150ul , Konzentration: 1000 µg/ml von91647 Nanodrop;	GeneID (NCBI): von91647	CloneNo.: 1H9A9
Wirt: Maus	Vollständiger Name: ATP synthase mitochondrial F1 complex assembly factor 2	Empfohlene Verdünnungen: WB 1:2000-1:10000 IHC 1:250-1:1000
Isotyp: IgG1	Berechnete Masse: 289 aa, 33 kDa	
Immunogen Katalognummer: AG29065	Beobachtete Masse: ~30 kDa	

Anwendungen

Geprüfte Anwendungen:

IHC, WB, ELISA

Getestete Reaktivität:

Human, Maus, Ratte

Hinweis-IHC: Antigendemaskierung mit TE-Puffer pH 9,0 empfohlen. (*) Wahlweise kann die Antigendemaskierung auch mit Citratpuffer pH 6,0 erfolgen.

Positivkontrollen:

WB : HCT 116-Zellen, HEK-293-Zellen, HeLa-Zellen, HepG2-Zellen, Jurkat-Zellen, LNCaP-Zellen, MCF-7-Zellen, NIH/3T3-Zellen

IHC : Mausherzgewebe,

Hintergrundinformationen

ATP synthase mitochondrial F1 complex assembly factor 2 (ATPAF2) also name as ATP12 and ATP12p, is an essential house keeping protein. ATPAF2 is an assembly factor for the F1 component of mitochondrial ATP synthase. This protein binds specifically to the F1 alpha subunit and is thought to prevent this subunit from forming nonproductive homooligomers during enzyme assembly. The calculated MW is 33 kDa, 68351-1-Ig can detect bands around 30 kDa and 50 kDa, the larger band may correspond to dimer or complex form. (PMID: 1826907, 11410595)

Lagerung

Lagerungsbedingungen:

Bei -20°C lagern. Nach dem Versand ein Jahr lang stabil

Lagerungspuffer:

PBS mit 0.02% Natriumazid und 50% Glycerin pH 7.3.

Aliquotieren ist nicht notwendig bei -20°C Lagerung

*** 20ul-Größen enthalten 0.1% BSA

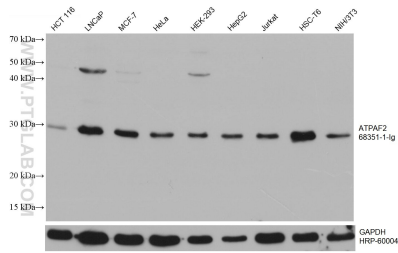
For technical support and original validation data for this product please contact:

T: 1 (888) 4PTGLAB (1-888-478-4522) (toll free in USA), or 1(312) 455-8498 (outside USA)

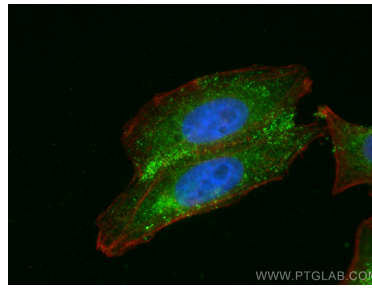
E: proteintech@ptglab.com
W: ptglab.com

This product is exclusively available under Proteintech Group brand and is not available to purchase from any other manufacturer.

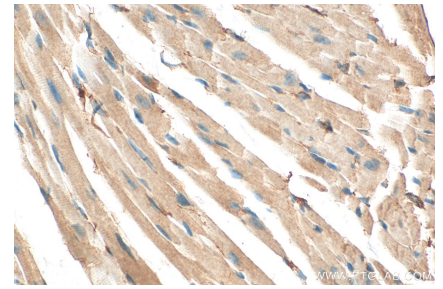
Ausgewählte Validierungsdaten



Various lysates were subjected to SDS PAGE followed by western blot with 68351-1-Ig (ATPAF2 antibody) at dilution of 1:5000 incubated at room temperature for 1.5 hours. The membrane was stripped and reblotted with HRP-conjugated GAPDH Monoclonal antibody (HRP-60004) as loading control.



Immunofluorescent analysis of (4% PFA) fixed HepG2 cells using ATPAF2 antibody (68351-1-Ig, Clone: 1H9A9) at dilution of 1:800 and CoraLite®488-Conjugated AffiniPure Goat Anti-Mouse IgG(H+L), CL594-Phalloidin (red).



Immunohistochemical analysis of paraffin-embedded mouse heart tissue slide using 68351-1-Ig (ATPAF2 antibody) at dilution of 1:500 (under 40x lens). Heat mediated antigen retrieval with Tris-EDTA buffer (pH 9.0).