

Nur für Forschungszwecke

MED6 Monoklonaler Antikörper

Katalog-Nr.:68352-1-Ig



Allgemeine Informationen

Katalog-Nr.: 68352-1-Ig	GenBank-Zugangsnummer: BC004106	Reinigungsmethode: Protein-A-Reinigung
Größe: 150ul, Konzentration: 1000 µg/ml von10001 Nanodrop;	GeneID (NCBI): Vollständiger Name: mediator complex subunit 6	CloneNo.: 3E4G10
Wirt: Maus	Berechnete Masse: 28 kDa	Empfohlene Verdünnungen: WB 1:5000-1:50000
Isotyp: IgG2b	Beobachtete Masse: 33 kDa	
Immunogen Katalognummer: AG7645		

Anwendungen

Geprüfte Anwendungen:
WB, ELISA

Getestete Reaktivität:
Human, Maus, Ratte

Positivkontrollen:
WB : U2OS-Zellen, 4T1-Zellen, HEK-293-Zellen, HeLa-Zellen, Jurkat-Zellen, LNCaP-Zellen, T-47D-Zellen

Hintergrundinformationen

MED6 is a part of mediator complex. Mediator functions as a bridge to convey information from gene-specific regulatory proteins to the basal RNA polymerase II transcription machinery. Mediator is recruited to promoters by direct interactions with regulatory proteins and serves as a scaffold for the assembly of a functional preinitiation complex with RNA polymerase II and the general transcription factors.

Lagerung

Lagerungsbedingungen:
Bei -20°C lagern. Nach dem Versand ein Jahr lang stabil

Lagerungspuffer:
PBS mit 0.02% Natriumazid und 50% Glycerin pH 7.3.

Aliquotieren ist nicht notwendig bei -20°C Lagerung

*** 20ul-Größen enthalten 0.1% BSA

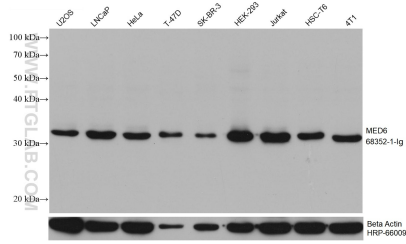
For technical support and original validation data for this product please contact:

T: 1 (888) 4PTGLAB (1-888-478-4522) (toll free in USA), or 1(312) 455-8498 (outside USA)

E: proteintech@ptglab.com
W: ptglab.com

This product is exclusively available under Proteintech Group brand and is not available to purchase from any other manufacturer.

Ausgewählte Validierungsdaten



Various lysates were subjected to SDS PAGE followed by western blot with 68352-1-Ig (MED6 antibody) at dilution of 1:10000 incubated at room temperature for 1.5 hours. The membrane was stripped and reblotted with HRP-conjugated Beta Actin Monoclonal antibody (HRP-66009) as loading control.