

Nur für Forschungszwecke

CRYBA2 Monoklonaler Antikörper

Katalog-Nr.:68354-1-Ig



Allgemeine Informationen

Katalog-Nr.: 68354-1-Ig	GenBank-Zugangsnummer: BC006285	Reinigungsmethode: Protein-G-Reinigung
Größe: 150ul , Konzentration: 1000 µg/ml von1412 Nanodrop;	GeneID (NCBI): 1412	CloneNo.: 1G1A9
Wirt: Maus	Vollständiger Name: crystallin, beta A2	Empfohlene Verdünnungen: WB 1:5000-1:50000
Isotyp: IgG1	Berechnete Masse: 197 aa, 22 kDa	
Immunogen Katalognummer: AG8244	Beobachtete Masse: 22 kDa	

Anwendungen

Geprüfte Anwendungen:
WB, ELISA

Getestete Reaktivität:
Human, Maus, Ratte

Positivkontrollen:

WB : Ratten-Augengewebe, Maus-Augengewebe

Hintergrundinformationen

CRYBA2, also named as Beta A2 crystallin, is a member of crystallin superfamily. Mammalian lens crystallins are divided into alpha, beta, and gamma families; beta and gamma crystallins are also defined as a superfamily. Alpha and beta families are further divided into acidic and basic groups. Crystallins are the dominant structural components of the vertebrate eye lens. The MW of this protein is 22 kDa, and this antibody specially recognises the 22 kDa protein.

Lagerung

Lagerungsbedingungen:
Bei -20°C lagern. Nach dem Versand ein Jahr lang stabil

Lagerungspuffer:
PBS mit 0.02% Natriumazid und 50% Glycerin pH 7.3.

Aliquotieren ist nicht notwendig bei -20°C Lagerung

*** 20ul-Größen enthalten 0.1% BSA

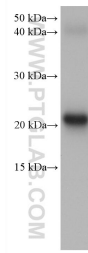
For technical support and original validation data for this product please contact:

T: 1 (888) 4PTGLAB (1-888-478-4522) (toll free
in USA), or 1(312) 455-8498 (outside USA)

E: proteintech@ptglab.com
W: ptglab.com

This product is exclusively available under Proteintech Group brand and is not available to purchase from any other manufacturer.

Ausgewählte Validierungsdaten



rat eye tissue were subjected to SDS PAGE followed by western blot with 68354-1-Ig (CRYBA2 antibody) at dilution of 1:20000 incubated at room temperature for 1.5 hours.