

Nur für Forschungszwecke

# MID2 Monoklonaler Antikörper

Katalog-Nr.:68359-1-Ig



## Allgemeine Informationen

|  |  |   |
|--|--|---|
| <b>Katalog-Nr.:</b><br>68359-1-Ig  | <b>GenBank-Zugangsnummer:</b><br>BC017707  | <b>Reinigungsmethode:</b><br>Protein-G-Reinigung    |
| <b>Größe:</b><br>150ul , Konzentration: 1000 µg/ml von11043<br>Nanodrop; | <b>GeneID (NCBI):</b><br>11043             | <b>CloneNo.:</b><br>1F9E4                           |
| <b>Wirt:</b><br>Maus   | <b>Vollständiger Name:</b><br>midline 2    | <b>Empfohlene Verdünnungen:</b><br>WB 1:1000-1:4000 |
| <b>Isotyp:</b><br>IgG1   | <b>Berechnete Masse:</b><br>715 aa, 81 kDa |   |
| <b>Immunogen Katalognummer:</b><br>AG30793                               | <b>Beobachtete Masse:</b><br>80-83 kDa     |   |

## Anwendungen

|   |  |
|---|--|
| <b>Geprüfte Anwendungen:</b><br>WB, ELISA | <b>Positivkontrollen:</b><br>WB : A549-Zellen, HEK-293-Zellen, Jurkat-Zellen, MCF-7-Zellen |
| <b>Getestete Reaktivität:</b><br>Human    |  |

## Hintergrundinformationen

Midline2 (MID2) is an ubiquitin-conjugating E2 enzyme that is involved in tumor development and has a physical interaction with breast cancer 1,early-onset (BRCA1).

## Lagerung

**Lagerungsbedingungen:**  
Bei -20°C lagern. Nach dem Versand ein Jahr lang stabil  
**Lagerungspuffer:**  
PBS mit 0.02% Natriumazid und 50% Glycerin pH 7.3.  
Aliquotieren ist nicht notwendig bei -20°C Lagerung

**\*\*\* 20ul-Größen enthalten 0.1% BSA**

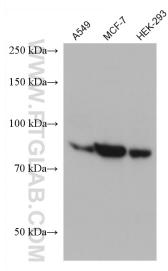
For technical support and original validation data for this product please contact:

T: 1 (888) 4PTGLAB (1-888-478-4522) (toll free in USA), or 1(312) 455-8498 (outside USA)

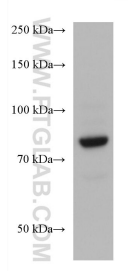
E: proteintech@ptglab.com  
W: ptglab.com

This product is exclusively available under Proteintech Group brand and is not available to purchase from any other manufacturer.

## Ausgewählte Validierungsdaten



Various lysates were subjected to SDS PAGE followed by western blot with 68359-1-Ig (MID2 antibody) at dilution of 1:2000 incubated at room temperature for 1.5 hours.



Jurkat cells were subjected to SDS PAGE followed by western blot with 68359-1-Ig (MID2 antibody) at dilution of 1:2000 incubated at room temperature for 1.5 hours.