

Nur für Forschungszwecke

CCDC50 Monoklonaler Antikörper

Katalog-Nr.:68369-1-Ig



Allgemeine Informationen

Katalog-Nr.: 68369-1-Ig	GenBank-Zugangsnummer: BC065004	Reinigungsmethode: Protein-G-Reinigung
Größe: 150ul , Konzentration: 500 µg/ml von Nanodrop;	GeneID (NCBI): 152137	CloneNo.: 2F12G7
Wirt: Maus	Vollständiger Name: coiled-coil domain containing 50	Empfohlene Verdünnungen: WB 1:20000-1:100000
Isotyp: IgG1	Berechnete Masse: 482 aa, 56 kDa	
Immunogen Katalognummer: AG15889	Beobachtete Masse: 36-38 kDa	

Anwendungen

Geprüfte Anwendungen:
WB, ELISA

Getestete Reaktivität:
Human

Positivkontrollen:

WB : A549-Zellen, 4T1-Zellen, HEK-293-Zellen, HeLa-Zellen, HepG2-Zellen, K-562-Zellen, NIH/3T3-Zellen

Hintergrundinformationen

CCDC50 encodes Ymer, an effector of epidermal growth factor (EGF)-mediated cell signaling that is ubiquitously expressed in different organs and has been suggested to inhibit down-regulation of the EGF receptor. CCDC50 act as a multifunctional regulator in NF-κB and Fas signaling pathways. In chronic lymphocytic leukaemia (CLL) and mantle cell lymphoma (MCL), CCDC50 is required for the survival of MCL and CLL cancer cells. Recently, CCDC50 was shown to promote hepatocellular carcinoma through the Ras/Foxo4 signaling pathway. (PMID: 34453126, PMID: 32612200, PMID: 17503326)

Lagerung

Lagerungsbedingungen:
Bei -20°C lagern. Nach dem Versand ein Jahr lang stabil

Lagerungspuffer:
PBS mit 0.02% Natriumazid und 50% Glycerin pH 7.3.

Aliquotieren ist nicht notwendig bei -20°C Lagerung

***** 20ul-Größen enthalten 0.1% BSA**

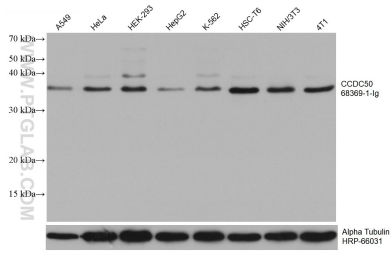
For technical support and original validation data for this product please contact:

T: 1 (888) 4PTGLAB (1-888-478-4522) (toll free in USA), or 1(312) 455-8498 (outside USA)

E: proteintech@ptglab.com
W: ptglab.com

This product is exclusively available under Proteintech Group brand and is not available to purchase from any other manufacturer.

Ausgewählte Validierungsdaten



Various lysates were subjected to SDS PAGE followed by western blot with 68369-1-Ig (CCDC50 antibody) at dilution of 1:50000 incubated at room temperature for 1.5 hours. The membrane was stripped and reblotted with HRP-conjugated Alpha Tubulin Monoclonal antibody (HRP-66031) as loading control.