

Nur für Forschungszwecke

TBCC Monoklonaler Antikörper

Katalog-Nr.:68371-1-Ig



Allgemeine Informationen

Katalog-Nr.: 68371-1-Ig	GenBank-Zugangsnummer: BC020170	Reinigungsmethode: Protein-G-Reinigung
Größe: 150ul , Konzentration: 1000 µg/ml von6903 Nanodrop;	GeneID (NCBI): 287D9	CloneNo.: 2B7D9
Wirt: Maus	Vollständiger Name: tubulin folding cofactor C	Empfohlene Verdünnungen: WB 1:5000-1:50000
Isotyp: IgG1	Berechnete Masse: 346 aa, 39 kDa	
Immunogen Katalognummer: AG8962	Beobachtete Masse: 39 kDa	

Anwendungen

Geprüfte Anwendungen:
WB, ELISA

Getestete Reaktivität:
Human, Maus, Ratte

Positivkontrollen:

WB : HT-1376 cells, 4T1-Zellen, HeLa-Zellen, HepG2-Zellen, MDA-MB-231-Zellen, MDA-MB-468-Zellen, NIH/3T3-Zellen

Hintergrundinformationen

TBCC, also named CFC. Expressed in the retina. Expressed in the rod and cone photoreceptors, extending from the inner segments (IS), through the outer nuclear layer (ONL) and into the synapses in the outer plexiform layer (OPL). Strongly expressed to the photoreceptor connecting cilium at the tips of the IS (at protein level). Cofactor C was cytoplasmic in distribution (PMID: 12417528).

Lagerung

Lagerungsbedingungen:
Bei -20°C lagern. Nach dem Versand ein Jahr lang stabil

Lagerungspuffer:
PBS mit 0.02% Natriumazid und 50% Glycerin pH 7.3.

Aliquotieren ist nicht notwendig bei -20°C Lagerung

*** 20ul-Größen enthalten 0.1% BSA

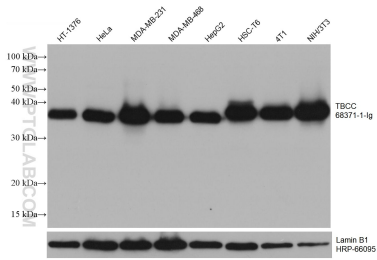
For technical support and original validation data for this product please contact:

T: 1 (888) 4PTGLAB (1-888-478-4522) (toll free in USA), or 1(312) 455-8498 (outside USA)

E: proteintech@ptglab.com
W: ptglab.com

This product is exclusively available under Proteintech Group brand and is not available to purchase from any other manufacturer.

Ausgewählte Validierungsdaten



Various lysates were subjected to SDS PAGE followed by western blot with 68371-1-Ig (TBCC antibody) at dilution of 1:10000 incubated at room temperature for 1.5 hours. The membrane was stripped and reblotted with HRP-conjugated Lamin B1 Monoclonal antibody (HRP-66095) as loading control.