

Nur für Forschungszwecke

# CEA Monoklonaler Antikörper

Katalog-Nr.:68377-1-Ig



## Allgemeine Informationen

<b>Katalog-Nr.:</b> 68377-1-Ig	<b>GenBank-Zugangsnummer:</b> BC034671	<b>Reinigungsmethode:</b> Protein-G-Reinigung
<b>Größe:</b> 150ul , Konzentration: 1000 µg/ml von1048 Nanodrop;	<b>GeneID (NCBI):</b> carcinoembryonic antigen-related cell adhesion molecule 5	<b>CloneNo.:</b> 2B8H6
<b>Wirt:</b> Maus	<b>Vollständiger Name:</b> carcinoembryonic antigen-related cell adhesion molecule 5	<b>Empfohlene Verdünnungen:</b> WB 1:5000-1:50000 IHC 1:2500-1:10000
<b>Isotyp:</b> IgG1	<b>Berechnete Masse:</b> 77 kDa	
	<b>Beobachtete Masse:</b> 180-200 kDa	

## Anwendungen

### Geprüfte Anwendungen:

IHC, WB, ELISA

### Getestete Reaktivität:

Human

**Hinweis-IHC: Antigendemaskierung mit TE-Puffer pH 9,0 empfohlen. (\*) Wahlweise kann die Antigendemaskierung auch mit Citratpuffer pH 6,0 erfolgen.**

### Positivkontrollen:

WB : HaCaT-Zellen, HT-29-Zellen, humanes Rektumgewebe

IHC : humanes Kolonkarzinomgewebe,

## Hintergrundinformationen

Carcinoembryonic antigen (CEA), also known as CEACAM5 or CD66e, is a cell surface glycoprotein belonging to the immunoglobulin superfamily, mainly serving as a cell adhesion molecule mediating intercellular contact by both homophilic and heterophilic binding (PMID: 21731662). CEA inhibits anoikis and plays a role in tumorigenesis and metastasis. CEA has been found to be overexpressed in a wide variety of human cancers, including colon, breast, and lung (PMID: 17167768). CEA is a tumor marker and is routinely exploited for diagnosis.

## Lagerung

### Lagerungsbedingungen:

Bei -20°C lagern. Nach dem Versand ein Jahr lang stabil

### Lagerungspuffer:

PBS mit 0.02% Natriumazid und 50% Glycerin pH 7.3.

Aliquotieren ist nicht notwendig bei -20°C Lagerung

\*\*\* 20ul-Größen enthalten 0.1% BSA

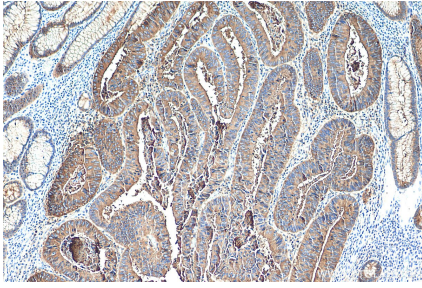
For technical support and original validation data for this product please contact:

T: 1 (888) 4PTGLAB (1-888-478-4522) (toll free in USA), or 1(312) 455-8498 (outside USA)

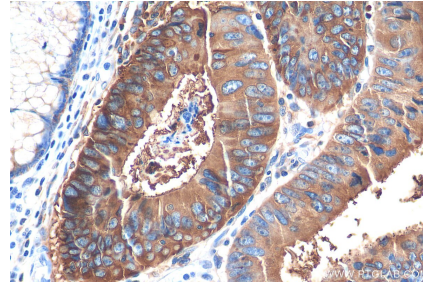
E: proteintech@ptglab.com  
W: ptglab.com

This product is exclusively available under Proteintech Group brand and is not available to purchase from any other manufacturer.

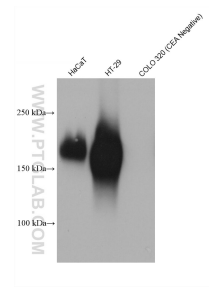
## Ausgewählte Validierungsdaten



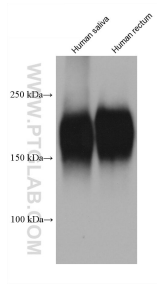
Immunohistochemical analysis of paraffin-embedded human colon cancer tissue slide using 68377-1-Ig (CEACAM5 antibody) at dilution of 1:5000 (under 10x lens). Heat mediated antigen retrieval with Tris-EDTA buffer (pH 9.0).



Immunohistochemical analysis of paraffin-embedded human colon cancer tissue slide using 68377-1-Ig (CEACAM5 antibody) at dilution of 1:5000 (under 40x lens). Heat mediated antigen retrieval with Tris-EDTA buffer (pH 9.0).



Various lysates were subjected to SDS PAGE followed by western blot with 68377-1-Ig (CEA antibody) at dilution of 1:10000 incubated at room temperature for 1.5 hours.



Various lysates were subjected to SDS PAGE followed by western blot with 68377-1-Ig (CEA antibody) at dilution of 1:10000 incubated at room temperature for 1.5 hours.