

Nur für Forschungszwecke

TSC2 Monoklonaler Antikörper

Katalog-Nr.:68380-1-Ig



Allgemeine Informationen

Katalog-Nr.: 68380-1-Ig	GenBank-Zugangsnummer: BC150300	Reinigungsmethode: Protein-G-Reinigung
Größe: 150ul , Konzentration: 1000 µg/ml von7249	GeneID (NCBI): von7249	CloneNo.: 1A10B2
Nanodrop;	Vollständiger Name: tuberous sclerosis 2	Empfohlene Verdünnungen: WB 1:2000-1:10000
Wirt: Maus	Berechnete Masse: 1807 aa, 201 kDa	
Isotyp: IgG1	Beobachtete Masse: 200 kDa	

Anwendungen

Geprüfte Anwendungen: WB, ELISA	Positivkontrollen:
Getestete Reaktivität: Human, Maus	WB : HeLa-Zellen, MCF-7-Zellen, NIH/3T3-Zellen, PC-3-Zellen

Hintergrundinformationen

TSC2, also named Tuberin, plays an essential role in the cellular energy response pathway. TSC2 forms a physical and functional complex with TSC1 that can inhibit the nutrient-mediated or growth factor-stimulated phosphorylation of S6K1 and EIF4EBP1 by negatively regulating mTORC1 signaling.

Lagerung

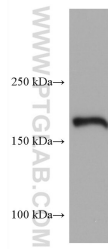
Lagerungsbedingungen:
Bei -20°C lagern. Nach dem Versand ein Jahr lang stabil
Lagerungspuffer:
PBS mit 0.02% Natriumazid und 50% Glycerin pH 7.3.
Aliquotieren ist nicht notwendig bei -20°C Lagerung

***** 20ul-Größen enthalten 0.1% BSA**

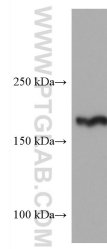
For technical support and original validation data for this product please contact:
T: 1 (888) 4PTGLAB (1-888-478-4522) (toll free in USA), or 1(312) 455-8498 (outside USA)
E: proteintech@ptglab.com
W: ptglab.com

This product is exclusively available under Proteintech Group brand and is not available to purchase from any other manufacturer.

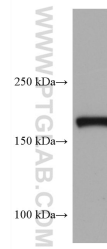
Ausgewählte Validierungsdaten



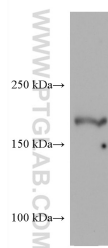
HeLa cells were subjected to SDS PAGE followed by western blot with 68380-1-Ig (TSC2 antibody) at dilution of 1:5000 incubated at room temperature for 1.5 hours.



MCF-7 cells were subjected to SDS PAGE followed by western blot with 68380-1-Ig (TSC2 antibody) at dilution of 1:5000 incubated at room temperature for 1.5 hours.



PC-3 cells were subjected to SDS PAGE followed by western blot with 68380-1-Ig (TSC2 antibody) at dilution of 1:5000 incubated at room temperature for 1.5 hours.



NIH/3T3 cells were subjected to SDS PAGE followed by western blot with 68380-1-Ig (TSC2 antibody) at dilution of 1:5000 incubated at room temperature for 1.5 hours.