

Nur für Forschungszwecke

smooth muscle actin specific Rekombinanter Antikörper



Katalog-Nr.: 80008-1-RR

Vorgestelltes Produkt

4 Publikationen

Allgemeine Informationen

Katalog-Nr.: 80008-1-RR	GenBank-Zugangsnummer: NM_001613	Reinigungsmethode: Protein-A-Reinigung
Größe: 100ul, Konzentration: 260 µg/ml von Nanodrop;	GeneID (NCBI): 59	CloneNo.: 5H7
Wirt: Kaninchen	Vollständiger Name: actin, alpha 2, smooth muscle, aorta	Empfohlene Verdünnungen: WB 1:20000-1:100000 IHC 1:2500-1:10000 IF 1:50-1:500
Isotyp: IgG	Berechnete Masse: 42 kDa	
	Beobachtete Masse: 42 kDa	

Anwendungen

Geprüfte Anwendungen:

FC, IF, IHC, WB, ELISA

In Publikationen genannte Anwendungen:

IF, IHC, WB

Getestete Reaktivität:

Hausschwein, Huhn, Human, Maus, Ratte, Zebrafisch

Zitierte Arten:

Human, Maus, Ratte

Hinweis-IHC: Antigendemaskierung mit TE-Puffer pH 9,0 empfohlen. (*) Wahlweise kann die Antigendemaskierung auch mit Citratpuffer pH 6,0 erfolgen.

Positivkontrollen:

WB: Maus-Kolongewebe, A549-Zellen, Hausschwein-Venengewebe, Hühnerkropfgewebe, Ratten-Kolongewebe, Zebrafischgewebe

IHC: humanes Lebergewebe, humanes Appendizitis-Gewebe, humanes Herzgewebe, humanes Kolongewebe, Maus-Kolongewebe, Ratten-Kolongewebe

IF: Mausherzgewebe, Mausembryogewebe

Hintergrundinformationen

ACTA2 (also known as α -smooth muscle actin or α -SMA) belongs to the actin family. Actins are highly conserved proteins that are involved in various types of cell motility and are ubiquitously expressed in all eukaryotic cells. ACTA2 is primarily expressed in vascular smooth muscle and anti-ACTA2 is commonly used to marker smooth muscle cells.

Bemerkenswerte Veröffentlichungen

Verfasser	Pubmed ID	Journal	Anwendung
Yingying Luo	36115414	Exp Cell Res	WB
Jingjing Liu	35719213	Drug Des Devel Ther	WB,IHC,IF
Yue Zhang	35149188	Pharmacol Res	WB,IHC

Lagerung

Lagerungsbedingungen:

Bei -20°C lagern. Nach dem Versand ein Jahr lang stabil

Lagerungspuffer:

PBS mit 0.02% Natriumazid und 50% Glycerin pH 7.3.

Aliquotieren ist nicht notwendig bei -20°C Lagerung

*** 20ul-Größen enthalten 0.1% BSA

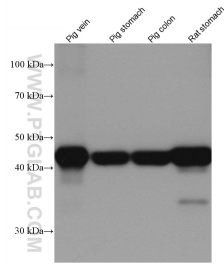
For technical support and original validation data for this product please contact:

T: 1 (888) 4PTGLAB (1-888-478-4522) (toll free in USA), or 1(312) 455-8498 (outside USA)

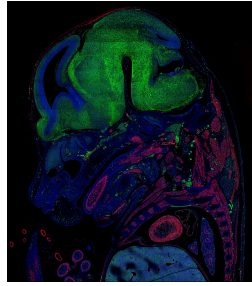
E: proteintech@ptglab.com
W: ptglab.com

This product is exclusively available under Proteintech Group brand and is not available to purchase from any other manufacturer.

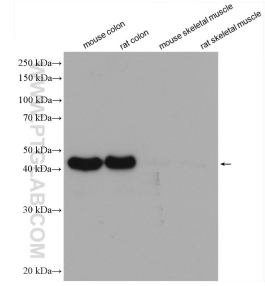
Ausgewählte Validierungsdaten



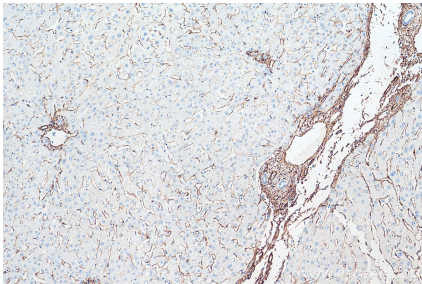
Various lysates were subjected to SDS PAGE followed by western blot with 80008-1-RR (smooth muscle actin specific antibody) at dilution of 1:100000 incubated at room temperature for 1.5 hours.



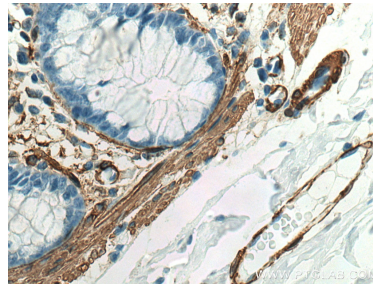
E14.5 FFPE mouse embryo section stained for smooth muscle actin (red, Cat. No 80008-1-RR) and alpha tubulin (green, Cat. CL488-66031). The alpha tubulin was conjugated to CoraLite-488 fluorescent dye. In red, you can see muscle tissue clearly stained including the tongue, heart, and arteries. Nerves and neurons are stained green since they are rich in tubulin. Image credit: @Immunofluorescence on Instagram



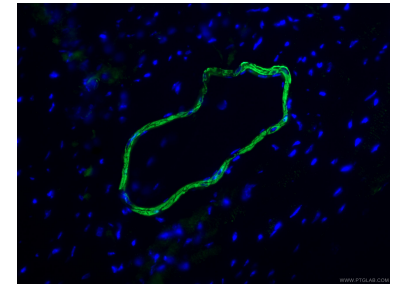
Various lysates were subjected to SDS PAGE followed by western blot with 80008-1-RR (smooth muscle actin specific antibody) at dilution of 1:100000 incubated at room temperature for 1.5 hours.



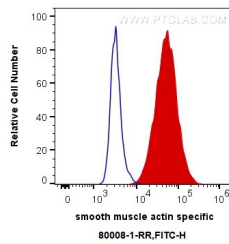
Immunohistochemical analysis of paraffin-embedded human liver tissue slide using 80008-1-RR (smooth muscle actin specific antibody) at dilution of 1:5000 (under 10x lens). Heat mediated antigen retrieval with Tris-EDTA buffer (pH 9.0).



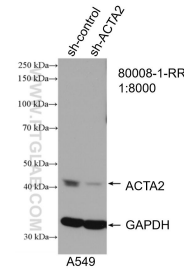
Immunohistochemical analysis of paraffin-embedded human colon tissue slide using 80008-1-RR (a-SMA specific antibody) at dilution of 1:3000 (under 40x lens). Heat mediated antigen retrieval with Tris-EDTA buffer (pH 9.0).



Immunofluorescent analysis of (4% PFA) fixed mouse heart tissue using 80008-1-RR (smooth muscle actin specific antibody), at dilution of 1:200 and CoraLite@488-Conjugated AffiniPure Goat Anti-Rabbit IgG(H+L).



1X10⁶ C2C12 cells were intracellularly stained with 0.4 ug Anti-Human smooth muscle actin specific (80008-1-RR, Clone:5H7) and CoraLite@488-Conjugated AffiniPure Goat Anti-Rabbit IgG(H+L) at dilution 1:1000 (red), or 0.4 ug Control Antibody. Cells were fixed with 4% PFA and permeabilized with Flow Cytometry Perm Buffer (PF00011-C).



WB result of smooth muscle actin specific antibody (80008-1-RR; 1:8000; incubated at room temperature for 1.5 hours) with sh-Control and sh-smooth muscle actin specific transfected A549 cells.