

Nur für Forschungszwecke

ACE2 Rekombinanter Antikörper

Katalog-Nr.:80063-1-RR



Allgemeine Informationen

Katalog-Nr.: 80063-1-RR	GenBank-Zugangsnummer: BC048094	Reinigungsmethode: Protein-A-Reinigung
Größe: 100ul , Konzentration: 500 µg/ml von Nanodrop;	GeneID (NCBI): 59272	CloneNo.: 4H12
Wirt: Kaninchen	Vollständiger Name: angiotensin I converting enzyme (peptidyl-dipeptidase A) 2	Empfohlene Verdünnungen: IHC 1:800-1:3200 IF 1:50-1:500
Isotyp: IgG	Berechnete Masse: 805 aa, 92 kDa	
Immunogen Katalognummer: AG30683		

Anwendungen

Geprüfte Anwendungen: IF, IHC, ELISA	Positivkontrollen: IHC : humanes Nierengewebe, IF : humanes Nierengewebe,
Getestete Reaktivität: Human	

Hinweis-IHC: Antigenmaskierung mit TE-Puffer pH 9,0 empfohlen. (*) Wahlweise kann die Antigenmaskierung auch mit Citratpuffer pH 6,0 erfolgen.

Hintergrundinformationen

ACE2 (Angiotensin-converting enzyme 2), also named as ACEH, is a zinc metalloprotease of the ACE family and a critical regulator of the reninangiotensin system. ACE2 has a more restricted tissue distribution than ACE, being found predominantly in the heart, kidneys, and testes although low levels have been detected in a variety of tissues (PMID:15983030). ACE2 has been shown to be a functional receptor of the human coronavirus SARS-CoV and SARS-CoV-2 (PMID: 32142651). The expression level and expression pattern of human ACE2 in different tissues might be critical for the susceptibility, symptoms, and outcome of 2019-nCoV/SARS-CoV-2 infection (PMID: 32133153). It can be used as a potential therapeutic target of SARS-CoV-2 (PMID: 32125455). The calculated molecular weight of ACE2 is 92kDa but it migrates to 120kDa due to N-glycosylation (PMID:16166094). Sometimes, several cleaved fragments can also be detected as 75kDa, 50 kDa or 37kDa (PMID: 29561187, 22009550, 30759273). It has 2 isoforms produced by alternative splicing. This antibody is specific to ACE2. The location of ACE2 is membrane and cytoplasm, however it accumulates in the nucleus during the mitosis (PMID: 1730413/PMID: 18292088). 80063-1-RR is specific for ACE2, and its antigen region is 30-356aa.

Lagerung

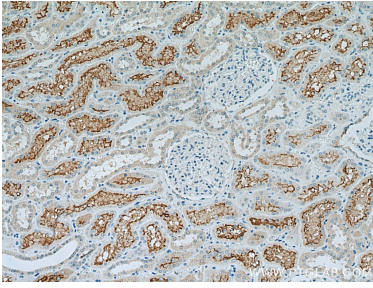
Lagerungsbedingungen:
Bei -20°C lagern. Nach dem Versand ein Jahr lang stabil
Lagerungspuffer:
PBS mit 0.02% Natriumazid und 50% Glycerin pH 7.3.
Aliquotieren ist nicht notwendig bei -20°C Lagerung

*** 20ul-Größen enthalten 0.1% BSA

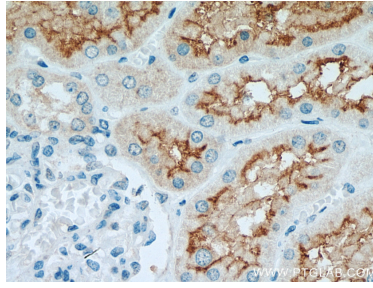
For technical support and original validation data for this product please contact:
T: 1 (888) 4PTGLAB (1-888-478-4522) (toll free in USA), or 1(312) 455-8498 (outside USA)
E: proteintech@ptglab.com
W: ptglab.com

This product is exclusively available under Proteintech Group brand and is not available to purchase from any other manufacturer.

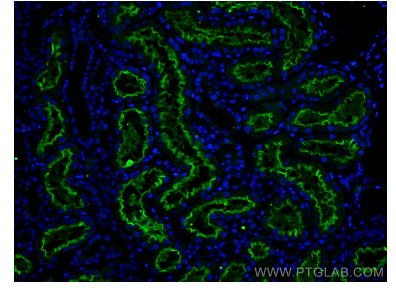
Ausgewählte Validierungsdaten



Immunohistochemical analysis of paraffin-embedded human kidney tissue slide using 80063-1-RR (ACE2 antibody) at dilution of 1:1500 (under 10x lens). Heat mediated antigen retrieval with Tris-EDTA buffer (pH 9.0).



Immunohistochemical analysis of paraffin-embedded human kidney tissue slide using 80063-1-RR (ACE2 antibody) at dilution of 1:1500 (under 40x lens). Heat mediated antigen retrieval with Tris-EDTA buffer (pH 9.0).



Immunofluorescent analysis of (4% PFA) fixed human kidney tissue using ACE2 antibody (80063-1-RR, Clone: 4H12) at dilution of 1:200 and CoraLite®488-Conjugated AffiniPure Goat Anti-Rabbit IgG(H+L).