

Nur für Forschungszwecke

Phospho-S6 Ribosomal protein (Ser236) Rekombinanter Antikörper



Katalog-Nr.: 80206-1-RR

Allgemeine Informationen

Katalog-Nr.: 80206-1-RR	GenBank-Zugangsnummer: BC000524	Reinigungsmethode: Protein-A-Reinigung
Größe: 100ul, Konzentration: 250 µg/ml von Nanodrop;	GeneID (NCBI): 6194	CloneNo.: 7K17
Wirt: Kaninchen	Vollständiger Name: ribosomal protein S6	Empfohlene Verdünnungen: WB 1:2000-1:10000
Isotyp: IgG	Berechnete Masse: 29 kDa	
	Beobachtete Masse: 32 kDa	

Anwendungen

Geprüfte Anwendungen: FC, WB, ELISA	Positivkontrollen: WB : HEK-293-Zellen, MCF-7-Zellen, Mit Calyculin A behandelte HEK-293-Zellen, Mit IGF-1 behandelte MCF-7-Zellen
Getestete Reaktivität: Human, Maus	

Hintergrundinformationen

Ribosomal protein S6 (RPS6) is one of the components of the 40S ribosomal subunit. RPS6 has been functionally regarded as the stimulator and/or inhibitor of certain types of mRNA translation, as well as the regulator of cellular metabolisms, cells size, survival and proliferation. RPS6 is phosphorylated at multiple sites, comprised between Ser235 and Ser247, by the p70 rpS6 kinase (S6K) 1, which is a major downstream effector of the mammalian target of rapamycin complex 1 (mTORC1). Phosphorylation of RPS6 at the dual site Ser235/236 occurs also independently of mTORC1, via the p90 ribosomal S6 kinases (RSK), which are activated by the extracellular signal-regulated kinases (ERK). Recent studies performed in pancreatic β-cells identified PKA as an additional RPS6 kinase, specifically involved in the phosphorylation of Ser235/236. (PMID: 26490682, PMID: 21814187, PMID: 31112404). 80206-1-RR specifically recognizes the phosphorylation site of Ser236 or dual site Ser235/236.

Lagerung

Lagerungsbedingungen:
Bei -20°C lagern. Nach dem Versand ein Jahr lang stabil
Lagerungspuffer:
PBS mit 0.02% Natriumazid und 50% Glycerin pH 7.3.
Aliquotieren ist nicht notwendig bei -20°C Lagerung

*** 20ul-Größen enthalten 0.1% BSA

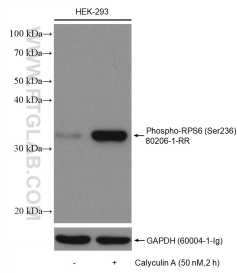
For technical support and original validation data for this product please contact:

T: 1 (888) 4PTGLAB (1-888-478-4522) (toll free
in USA), or 1(312) 455-8498 (outside USA)

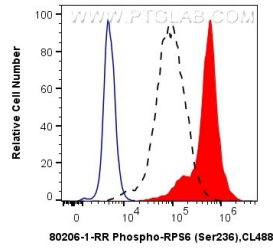
E: proteintech@ptglab.com
W: ptglab.com

This product is exclusively available under Proteintech Group brand and is not available to purchase from any other manufacturer.

Ausgewählte Validierungsdaten



Non-treated and Calyculin A treated HEK-293 cells were subjected to SDS PAGE followed by western blot with 80206-1-RR (Phospho-S6 Ribosomal protein (Ser236) antibody) at dilution of 1:5000 incubated at room temperature for 1.5 hours. The membrane was stripped and re-blotting with GAPDH antibody as loading control.



1X10⁶ HEK-293 cells untreated (dashed lines) or treated with Calyculin A (red) were intracellularly stained with 0.5 μ g Anti-Human Phospho-S6 Ribosomal protein (Ser236) (80206-1-RR, Clone:7K17) and CoraLite[®]488-Conjugated AffiniPure Goat Anti-Rabbit IgG(H+L) at dilution 1:1000, or 0.5 μ g Control Antibody (blue). Cells were fixed with 4% PFA and permeabilized with 90% MeOH.