

Nur für Forschungszwecke

S6 Ribosomal protein Rekombinanter Antikörper



Katalog-Nr.: 80208-1-RR

Allgemeine Informationen

Katalog-Nr.: 80208-1-RR	GenBank-Zugangsnummer: BC000524	Reinigungsmethode: Protein-A-Reinigung
Größe: 100ul, Konzentration: 300 µg/ml von Nanodrop;	GeneID (NCBI): 6194	CloneNo.: 6L9
Wirt: Kaninchen	Vollständiger Name: ribosomal protein S6	Empfohlene Verdünnungen: WB 1:5000-1:50000 IF 1:50-1:500
Isotyp: IgG	Berechnete Masse: 29 kDa	
	Beobachtete Masse: 32 kDa	

Anwendungen

Geprüfte Anwendungen: IF, WB, ELISA	Positivkontrollen: WB : LNCaP-Zellen, 4T1-Zellen, HEK-293-Zellen, HeLa-Zellen, HepG2-Zellen, Jurkat-Zellen, RAW 264.7-Zellen, Zebrafischgewebe
Getestete Reaktivität: Human, Maus, Ratte, Zebrafisch	IF : HepG2-Zellen,

Hintergrundinformationen

Ribosomal protein S6 (RPS6), Phosphoprotein NP33. It may play an important role in controlling cell growth and proliferation through the selective translation of particular classes of mRNA. Ribosomal protein S6 is the major substrate of protein kinases in eukaryote ribosomes. The phosphorylation is stimulated by growth factors, tumor promoting agents, and mitogens. It is dephosphorylated at growth arrest. Phosphorylated at Ser-235 and Ser-236 by RPS6KA1 and RPS6KA3; phosphorylation at these sites facilitates the assembly of the preinitiation complex.

Lagerung

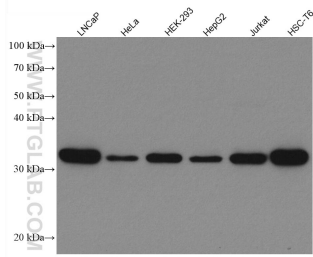
Lagerungsbedingungen:
Bei -20°C lagern. Nach dem Versand ein Jahr lang stabil
Lagerungspuffer:
PBS mit 0.02% Natriumazid und 50% Glycerin pH 7.3.
Aliquotieren ist nicht notwendig bei -20°C Lagerung

*** 20ul-Größen enthalten 0.1% BSA

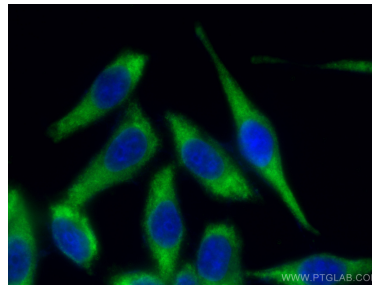
For technical support and original validation data for this product please contact:
T: 1 (888) 4PTGLAB (1-888-478-4522) (toll free in USA), or 1(312) 455-8498 (outside USA)
E: proteintech@ptglab.com
W: ptglab.com

This product is exclusively available under Proteintech Group brand and is not available to purchase from any other manufacturer.

Ausgewählte Validierungsdaten



Various lysates were subjected to SDS PAGE followed by western blot with 80208-1-RR (S6 Ribosomal protein antibody) at dilution of 1:15000 incubated at room temperature for 1.5 hours.



Immunofluorescent analysis of (-20°C Methanol) fixed HepG2 cells using S6 Ribosomal protein antibody (80208-1-RR, Clone: 6L9) at dilution of 1:200 and CoraLite®488-Conjugated AffiniPure Goat Anti-Rabbit IgG(H+L).