

Nur für Forschungszwecke

Phospho-SMAD1 (Ser195) Rekombinanter Antikörper



Katalog-Nr.:80257-1-RR

Allgemeine Informationen

| | | |
|--|--|--|
| Katalog-Nr.: 80257-1-RR | GenBank-Zugangsnummer: BC001878 | Reinigungsmethode: Protein-A-Reinigung |
| Größe: 100ul , Konzentration: 500 µg/ml von Nanodrop; | GeneID (NCBI): 4086 | CloneNo.: 1K6 |
| Wirt: Kaninchen | Vollständiger Name: SMAD family member 1 | Empfohlene Verdünnungen: WB 1:2000-1:10000 |
| Isotyp: IgG | Berechnete Masse: 52 kDa | |
| | Beobachtete Masse: 60 kDa | |

Anwendungen

| | |
|---|---|
| Geprüfte Anwendungen: WB, ELISA | Positivkontrollen: WB : A431-Zellen, Mit BMP2 behandelte HepG2-Zellen, mit UV behandelte A431-Zellen |
| Getestete Reaktivität: Human | |

Hintergrundinformationen

SMAD family member 1 (Smad1) have been involved in metastatic progression of many cancer types. Smad1 can be induced by many tumor-stimulating cytokines such as the bone morphogenetic protein 2 (BMP2) and TNF α and plays important roles in cell invasion and metastasis. BMP2 signalling is initiated by binding to its specific receptors, which leads to in the phosphorylation and nuclear translocation of Smad1. Translocated Smad1 then modulates the expression of downstream osteogenic genes. (PMID: 32954678, PMID: 30008908)

Lagerung

Lagerungsbedingungen:
Bei -20°C lagern.
Lagerungspuffer:
PBS mit 0.02% Natriumazid und 50% Glycerin pH 7.3.
Aliquotieren ist nicht notwendig bei -20°C Lagerung

*** 20ul-Größen enthalten 0.1% BSA

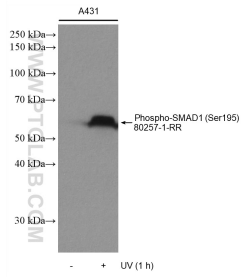
For technical support and original validation data for this product please contact:

T: 1 (888) 4PTGLAB (1-888-478-4522) (toll free
in USA), or 1(312) 455-8498 (outside USA)

E: proteintech@ptglab.com
W: ptglab.com

This product is exclusively available under Proteintech Group brand and is not available to purchase from any other manufacturer.

Ausgewählte Validierungsdaten



Non-treated and UV treated A431 cells were subjected to SDS PAGE followed by western blot with 80257-1-RR (Phospho-SMAD1 (Ser195) antibody) at dilution of 1:5000 incubated at room temperature for 1.5 hours.