

Nur für Forschungszwecke

BCL2 Rekombinanter Antikörper

Katalog-Nr.:80313-1-RR



Allgemeine Informationen

Katalog-Nr.: 80313-1-RR	GenBank-Zugangsnummer: BC027258	Reinigungsmethode: Protein-A-Reinigung
Größe: 100ul , Konzentration: 500 µg/ml von Nanodrop;	GeneID (NCBI): 596	CloneNo.: 305
Wirt: Kaninchen	Vollständiger Name: B-cell CLL/lymphoma 2	Empfohlene Verdünnungen: WB 1:5000-1:50000 IHC 1:2500-1:10000
Isotyp: IgG	Berechnete Masse: 26 kDa	
Immunogen Katalognummer: AG3508	Beobachtete Masse: 26 kDa	

Anwendungen

Geprüfte Anwendungen:

IHC, WB, ELISA

Getestete Reaktivität:

Human

Hinweis-IHC: Antigendemaskierung mit TE-Puffer pH 9,0 empfohlen. (*) Wahlweise kann die Antigendemaskierung auch mit Citratpuffer pH 6,0 erfolgen.

Positivkontrollen:

WB : Jurkat-Zellen, HL-60-Zellen, Raji-Zellen, THP-1-Zellen, U-937-Zellen

IHC : humanes Tonsillitisgewebe,

Hintergrundinformationen

BCL2 belongs to the Bcl-2 family. It suppresses apoptosis in a variety of cell systems including factor-dependent lymphohematopoietic and neural cells. BCL2 regulates cell death by controlling the mitochondrial membrane permeability (PMID: 10365962). It appears to function in a feedback loop system with caspases. BCL2 inhibits caspase activity either by preventing the release of cytochrome c from the mitochondria and/or by binding to the apoptosis-activating factor (APAF-1) (PMID: 10444588).

Lagerung

Lagerungsbedingungen:

Bei -20°C lagern. Nach dem Versand ein Jahr lang stabil

Lagerungspuffer:

PBS mit 0.02% Natriumazid und 50% Glycerin pH 7.3.

Aliquotieren ist nicht notwendig bei -20°C Lagerung

*** 20ul-Größen enthalten 0.1% BSA

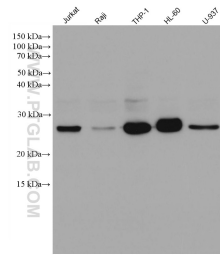
For technical support and original validation data for this product please contact:

T: 1 (888) 4PTGLAB (1-888-478-4522) (toll free
in USA), or 1(312) 455-8498 (outside USA)

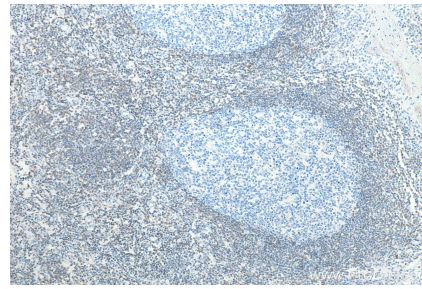
E: proteintech@ptglab.com
W: ptglab.com

This product is exclusively available under Proteintech Group brand and is not available to purchase from any other manufacturer.

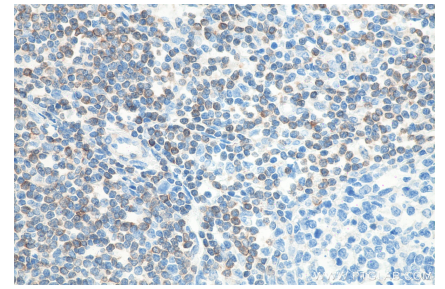
Ausgewählte Validierungsdaten



Various lysates were subjected to SDS PAGE followed by western blot with 80313-1-RR (BCL2 antibody) at dilution of 1:20000 incubated at room temperature for 1.5 hours.



Immunohistochemical analysis of paraffin-embedded human tonsillitis tissue slide using 80313-1-RR (BCL2 antibody) at dilution of 1:5000 (under 10x lens). Heat mediated antigen retrieval with Tris-EDTA buffer (pH 9.0).



Immunohistochemical analysis of paraffin-embedded human tonsillitis tissue slide using 80313-1-RR (BCL2 antibody) at dilution of 1:5000 (under 40x lens). Heat mediated antigen retrieval with Tris-EDTA buffer (pH 9.0).