

Allgemeine Informationen

Katalog-Nr.: 80323-1-RR	GenBank-Zugangsnummer: BC001650	Reinigungsmethode: Protein-A-Reinigung
Größe: 100ul, Konzentration: 1000 µg/ml von56339	GeneID (NCBI): 56339	CloneNo.: 219
Nanodrop;	Vollständiger Name: methyltransferase like 3	Empfohlene Verdünnungen: WB 1:5000-1:50000 IHC 1:50-1:500 IF 1:50-1:500
Wirt: Kaninchen	Berechnete Masse: 64 kDa	
Isotyp: IgG	Beobachtete Masse: 65-70 kDa	
Immunogen Katalognummer: AG7110		

Anwendungen

Geprüfte Anwendungen:

IF, IHC, WB, ELISA

Getestete Reaktivität:

Human, Maus, Ratte

Hinweis-IHC: Antigenmaskierung mit TE-Puffer pH 9,0 empfohlen. (*) Wahlweise kann die Antigenmaskierung auch mit Citratpuffer pH 6,0 erfolgen.

Positivkontrollen:

WB: LNCaP-Zellen, HEK-293-Zellen, HeLa-Zellen, HepG2-Zellen, Jurkat-Zellen, K-562-Zellen, Neuro-2a-Zellen, NIH/3T3-Zellen

IHC: Maushodengewebe, humanes Kolonkarzinomgewebe, humanes Lungenkarzinomgewebe, humanes Ösophaguskarzinomgewebe, Rattenhodengewebe

IF: Jurkat-Zellen,

Hintergrundinformationen

METTL3 is a key S-adenosyl-L-methionine-binding subunit, which is component of a complex multicomponent enzyme that catalyzes the methylation of internal adenosine residues in eukaryotic mRNA, forming N6-methyladenosine. It contains 2 putative nuclear localization signals and 2 consensus methylation motifs. The calculated molecular weight of METTL3 is 64 kDa, but modified METTL3 is about 65-70 kDa.

Lagerung

Lagerungsbedingungen:

Bei -20°C lagern.

Lagerungspuffer:

PBS mit 0.02% Natriumazid und 50% Glycerin pH 7.3.

Aliquotieren ist nicht notwendig bei -20°C Lagerung

*** 20ul-Größen enthalten 0.1% BSA

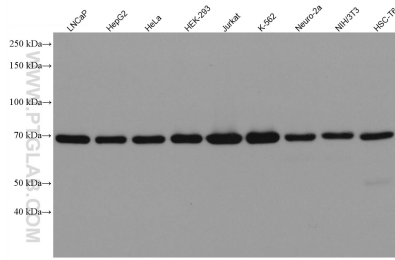
For technical support and original validation data for this product please contact:

T: 1 (888) 4PTGLAB (1-888-478-4522) (toll free in USA), or 1(312) 455-8498 (outside USA)

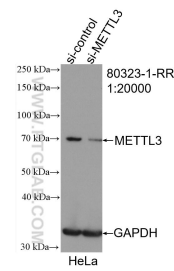
E: proteintech@ptglab.com
W: ptglab.com

This product is exclusively available under Proteintech Group brand and is not available to purchase from any other manufacturer.

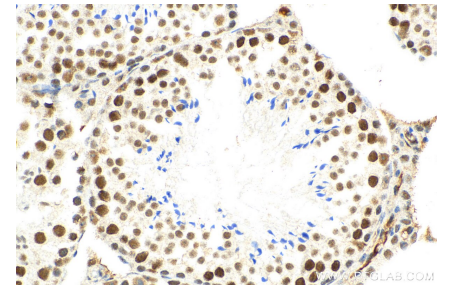
Ausgewählte Validierungsdaten



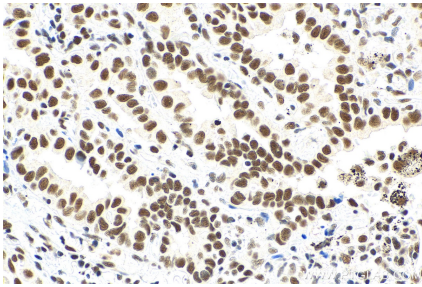
Various lysates were subjected to SDS PAGE followed by western blot with 80323-1-RR (METTL3 antibody) at dilution of 1:10000 incubated at room temperature for 1.5 hours.



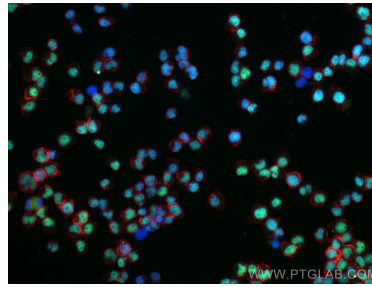
WB result of METTL3 antibody (80323-1-RR; 1:20000; incubated at room temperature for 1.5 hours) with sh-Control and sh-METTL3 transfected HeLa cells.



Immunohistochemical analysis of paraffin-embedded mouse testis tissue slide using 80323-1-RR (METTL3 antibody) at dilution of 1:200 (under 40x lens). Heat mediated antigen retrieval with Tris-EDTA buffer (pH 9.0).



Immunohistochemical analysis of paraffin-embedded human lung cancer tissue slide using 80323-1-RR (METTL3 antibody) at dilution of 1:200 (under 40x lens). Heat mediated antigen retrieval with Tris-EDTA buffer (pH 9.0).



Immunofluorescent analysis of (4% PFA) fixed Jurkat cells using METTL3 antibody (80323-1-RR, Clone: 219) at dilution of 1:200 and CoraLite® 488-Conjugated AffiniPure Goat Anti-Rabbit IgG(H+L), CL594-Phalloidin (red).