

Beta Catenin Rekombinanter Antikörper

Katalog-Nr.:80488-1-RR

Allgemeine Informationen

Katalog-Nr.: 80488-1-RR	GenBank-Zugangsnummer: BC058926	Reinigungsmethode: Protein-A-Reinigung
Größe: 100ul , Konzentration: 1000 µg/ml von1499 Nanodrop;	GeneID (NCBI): von1499	CloneNo.: 2124
Wirt: Kaninchen	Vollständiger Name: catenin (cadherin-associated protein), beta 1, 88kDa	Empfohlene Verdünnungen: WB 1:5000-1:50000 IHC 1:1000-1:4000 IF 1:1000-1:4000
Isotyp: IgG	Berechnete Masse: 781 aa, 86 kDa	
	Beobachtete Masse: 92 kDa	

Anwendungen

Geprüfte Anwendungen:

IF, IHC, WB, ELISA

Getestete Reaktivität:

Hausschwein, Human, Maus, Ratte, Zebrafisch

Hinweis-IHC: Antigendemaskierung mit TE-Puffer pH 9,0 empfohlen. (*) Wahlweise kann die Antigendemaskierung auch mit Citratpuffer pH 6,0 erfolgen.

Positivkontrollen:

WB : A431-Zellen, 4T1-Zellen, Hausschwein-Hirngewebe, HEK-293-Zellen, HeLa-Zellen, LNCaP-Zellen, MCF-7-Zellen, NIH/3T3-Zellen, Zebrafischgewebe

IHC : humanes Leberkarzinomgewebe, humanes Kolonkarzinomgewebe, humanes Mammakarzinomgewebe

IF : MCF-7-Zellen,

Hintergrundinformationen

β-Catenin, also known as CTNNB1, is an evolutionarily conserved, multifunctional intracellular protein. β-Catenin is a 92-kDa protein, originally identified in cell adhesion junctions (AJs) where it functions to bridge the cytoplasmic domain of cadherins to α-catenin and the actin cytoskeleton. Besides its essential role in the AJs, β-catenin is also a key downstream component of the canonical Wnt pathway that plays diverse and critical roles in embryonic development and adult tissue homeostasis. The Wnt/β-catenin pathway is also involved in the activation of other intracellular messengers such as calcium fluxes, JNK, and SRC kinases. Deregulation of β-catenin activity is associated with multiple diseases including cancers. (PMID: 22617422; 18334222)

Lagerung

Lagerungsbedingungen:

Bei -20°C lagern.

Lagerungspuffer:

PBS mit 0.02% Natriumazid und 50% Glycerin pH 7.3.

Aliquotieren ist nicht notwendig bei -20°C Lagerung

*** 20ul-Größen enthalten 0.1% BSA

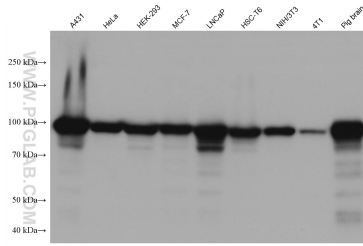
For technical support and original validation data for this product please contact:

T: 1 (888) 4PTGLAB (1-888-478-4522) (toll free in USA), or 1(312) 455-8498 (outside USA)

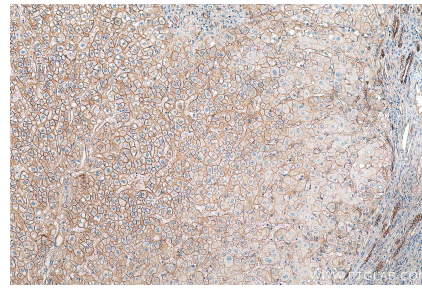
E: proteintech@ptglab.com
W: ptglab.com

This product is exclusively available under Proteintech Group brand and is not available to purchase from any other manufacturer.

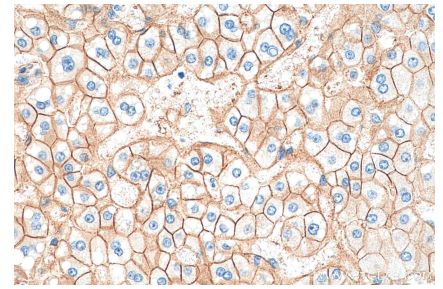
Ausgewählte Validierungsdaten



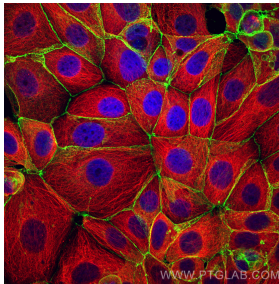
Various lysates were subjected to SDS PAGE followed by western blot with 80488-1-RR (Beta Catenin antibody) at dilution of 1:10000 incubated at room temperature for 1.5 hours.



Immunohistochemical analysis of paraffin-embedded human liver cancer tissue slide using 80488-1-RR (Beta Catenin antibody) at dilution of 1:2000 (under 10x lens). Heat mediated antigen retrieval with Tris-EDTA buffer (pH 9.0).



Immunohistochemical analysis of paraffin-embedded human liver cancer tissue slide using 80488-1-RR (Beta Catenin antibody) at dilution of 1:2000 (under 40x lens). Heat mediated antigen retrieval with Tris-EDTA buffer (pH 9.0).



Immunofluorescent analysis of (4% PFA) fixed MCF-7 cells using Beta Catenin antibody (80488-1-RR, Clone: 2J24) at dilution of 1:2000 and CoraLite@488-Conjugated AffiniPure Goat Anti-Rabbit IgG(H+L), Alpha Tubulin antibody (66031-1-Ig, Clone: 1E4C11, red).