

Nur für Forschungszwecke

# Occludin Rekombinanter Antikörper

Katalog-Nr.:80545-1-RR



## Allgemeine Informationen

<b>Katalog-Nr.:</b> 80545-1-RR	<b>GenBank-Zugangsnummer:</b> BC029886	<b>Reinigungsmethode:</b> Protein-A-Reinigung
<b>Größe:</b> 100ul , Konzentration: 500 µg/ml von Nanodrop;	<b>GeneID (NCBI):</b> 4950	<b>CloneNo.:</b> 8B2
<b>Wirt:</b> Kaninchen	<b>Vollständiger Name:</b> occludin	<b>Empfohlene Verdünnungen:</b> WB 1:5000-1:50000 IF 1:250-1:1000
<b>Isotyp:</b> IgG	<b>Berechnete Masse:</b> 522 aa, 59 kDa	
<b>Immunogen Katalognummer:</b> AG26173	<b>Beobachtete Masse:</b> 59 kDa	

## Anwendungen

<b>Geprüfte Anwendungen:</b> IF, WB, ELISA	<b>Positivkontrollen:</b>
<b>Getestete Reaktivität:</b> Hausschwein, Human, Maus	<b>WB :</b> HEK-293-Zellen, HaCaT-Zellen, Hausschwein-Kolongewebe, HUVEC-Zellen, Maus-Kolongewebe, U2OS-Zellen
	<b>IF :</b> MCF-7-Zellen,

## Hintergrundinformationen

Occludin is an integral membrane protein located at the tight junction. It is a tetraspanin protein with four transmembrane domains, intracellular N and C termini and two extracellular loops. Occludin plays a role in the formation and regulation of the tight junction paracellular permeability barrier. Occludin can exist in different isoforms, owing to modifications at the posttranscriptional and posttranslational levels, the monomeric occludin migrates as 53-65 kDa on SDS-PAGE (PMID: 22083955; 19457074).

## Lagerung

**Lagerungsbedingungen:**  
Bei -20°C lagern.  
**Lagerungspuffer:**  
PBS mit 0.02% Natriumazid und 50% Glycerin pH 7.3.  
**Aliquotieren ist nicht notwendig bei -20°C Lagerung**

**\*\*\* 20ul-Größen enthalten 0.1% BSA**

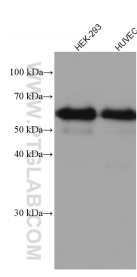
For technical support and original validation data for this product please contact:

T: 1 (888) 4PTGLAB (1-888-478-4522) (toll free  
in USA), or 1(312) 455-8498 (outside USA)

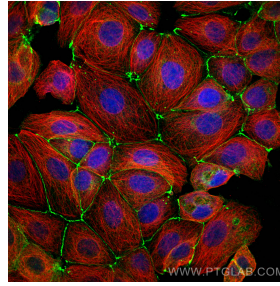
E: proteintech@ptglab.com  
W: ptglab.com

**This product is exclusively available under Proteintech Group brand and is not available to purchase from any other manufacturer.**

## Ausgewählte Validierungsdaten



HEK-293 cells were subjected to SDS PAGE followed by western blot with 80545-1-RR (Occludin antibody) at dilution of 1:40000 incubated at room temperature for 1.5 hours.



Immunofluorescent analysis of (4% PFA) fixed MCF-7 cells using Occludin antibody (80545-1-RR, Clone: 8B2 ) at dilution of 1:500 and CoraLite®488-Conjugated AffiniPure Goat Anti-Rabbit IgG(H+L), Alpha Tubulin antibody (66031-1-Ig, Clone: 1E4C11, red).