

Nur für Forschungszwecke

GAPDH (Human Specific) Rekombinanter Antikörper



Katalog-Nr.: 80570-1-RR **4 Publikationen**

Allgemeine Informationen

Katalog-Nr.: 80570-1-RR	GenBank-Zugangsnummer: BC004109	Reinigungsmethode: Protein-A-Reinigung
Größe: 100ul, Konzentration: 400 µg/ml von Nanodrop;	GeneID (NCBI): 2597	CloneNo.: 2G21
Wirt: Kaninchen	Vollständiger Name: glyceraldehyde-3-phosphate dehydrogenase	Empfohlene Verdünnungen: WB 1:2000-1:16000 IHC 1:400-1:1600 IF 1:200-1:800
Isotyp: IgG	Berechnete Masse: 36 kDa	
Immunogen Katalognummer: AG0766		

Anwendungen

Geprüfte Anwendungen:

IF, IHC, WB, ELISA

In Publikationen genannte Anwendungen:

WB

Getestete Reaktivität:

Human

Zitierte Arten:

Human

Positivkontrollen:

WB : HeLa-Zellen, HEK-293-Zellen, Jurkat-Zellen, K-562-Zellen

IHC : humanes Leberkarzinomgewebe, humanes Lungengewebe

IF : HeLa-Zellen,

Hinweis-IHC: Antigendemaskierung mit TE-Puffer pH 9,0 empfohlen. (*) Wahlweise kann die Antigendemaskierung auch mit Citratpuffer pH 6,0 erfolgen.

Hintergrundinformationen

Glyceraldehyde-3-phosphate dehydrogenase (GAPDH) catalyzes the phosphorylation of glyceraldehyde-3-phosphate during glycolysis. GAPDH participates in nuclear events including transcription, binding RNA, RNA transportation, DNA replication, DNA repair and apoptosis. Being stably and constitutively expressed at high levels in most tissues and cells, GAPDH is considered a housekeeping protein. It is widely used as a control for RT-PCR and also loading control in electrophoresis and Western blotting. GAPDH is normally expressed in cellular cytoplasm or membrane, but can occasionally translocate to the nucleus after the addition of post-translational modifications such as S-nitrosylation. This antibody is raised against full length GAPDH of human origin. It can recognize the 36 kDa GAPDH protein in most cells/tissues. In addition, a band below 36 kDa can always be detected as the isoform or spliced product of GAPDH (PMID: 23885286, 23877755, 19368702). Please note that some physiological factors, such as hypoxia and diabetes, increase GAPDH expression in certain cell types. For murine tissue samples, conjugated mouse antibody HRP-60004 and rabbit antibody 10494-1-AP are preferable. 80570-1-RR is human specific.

Bemerkenswerte Veröffentlichungen

Verfasser	Pubmed ID	Journal	Anwendung
Lizong Wang	36173462	J Cancer Res Clin Oncol	WB
Guanli Zhang	36193555	J Biochem Mol Toxicol	WB
Zhi-Hu Zhao	35128373	Mater Today Bio	WB

Lagerung

Lagerungsbedingungen:

Bei -20°C lagern.

Lagerungspuffer:

PBS mit 0.02% Natriumazid und 50% Glycerin pH 7.3.

Aliquotieren ist nicht notwendig bei -20°C Lagerung

***** 20ul-Größen enthalten 0.1% BSA**

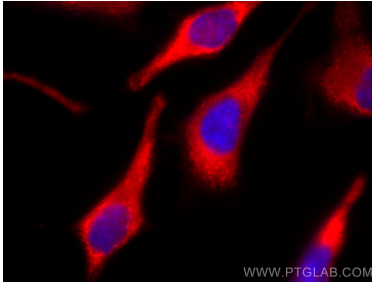
For technical support and original validation data for this product please contact:

T: 1 (888) 4PTGLAB (1-888-478-4522) (toll free in USA), or 1(312) 455-8498 (outside USA)

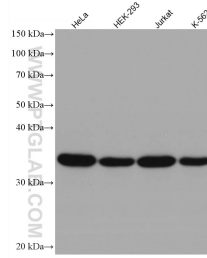
E: proteintech@ptglab.com
W: ptglab.com

This product is exclusively available under Proteintech Group brand and is not available to purchase from any other manufacturer.

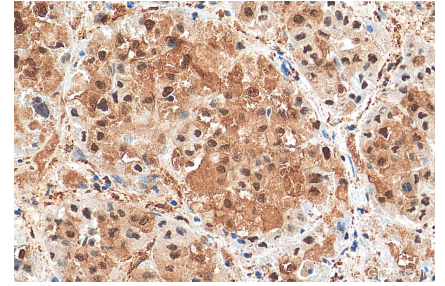
Ausgewählte Validierungsdaten



Immunofluorescent analysis of (-20°C Methanol) fixed HeLa cells using GAPDH (Human Specific) antibody (80570-1-RR, Clone: 2G21) at dilution of 1:400 and CoraLite®594-Conjugated AffiniPure Goat Anti-Rabbit IgG(H+L).



Various lysates were subjected to SDS PAGE followed by western blot with 80570-1-RR (GAPDH antibody) at dilution of 1:8000 incubated at room temperature for 1.5 hours.



Immunohistochemical analysis of paraffin-embedded human liver cancer tissue slide using 80570-1-RR (GAPDH (Human Specific) antibody) at dilution of 1:800 (under 40x lens). Heat mediated antigen retrieval with Tris-EDTA buffer (pH 9.0).