

Nur für Forschungszwecke

Phospho-PDH E1 Alpha (Ser300) Rekombinanter Antikörper



Katalog-Nr.: 80572-1-RR

Allgemeine Informationen

Katalog-Nr.: 80572-1-RR	GenBank-Zugangsnummer: BC002406	Reinigungsmethode: Protein-A-Reinigung
Größe: 100ul, Konzentration: 1000 µg/ml von 5160	GeneID (NCBI): 5160	CloneNo.: 2E19
Nanodrop:	Vollständiger Name: pyruvate dehydrogenase (lipoamide) alpha 1	Empfohlene Verdünnungen: WB 1:5000-1:50000
Wirt: Kaninchen	Berechnete Masse: 43 kDa	
Isotyp: IgG	Beobachtete Masse: 40 kDa	

Anwendungen

Geprüfte Anwendungen:
WB, ELISA

Getestete Reaktivität:
Human, Maus, Ratte

Positivkontrollen:

WB: HeLa-Zellen, Mit Calyculin A behandelte HEK-293-Zellen, Mit Calyculin A behandelte HeLa-Zellen, mit Calyculin A behandelte HSC-T6-Zellen, mit Calyculin A behandelte NIH/3T3-Zellen, NIH/3T3-Zellen

Hintergrundinformationen

PDH E1 Alpha (PDHA1), as the major component of PDH, can be phosphorylated and inactivated by PDHK1. PDHA1 contains three serine residues (Ser232, Ser293, or Ser300) that can be reversibly phosphorylated by a dedicated family of four inhibitory pyruvate dehydrogenase kinases (PDHK1-4) and two reactivating phosphatases (PDP1, 2). Hypoxia induces the expression of PDHK1 and PDHK3 and hyperphosphorylates PDHA1. Phosphorylated PDHA1 inactivates the whole pyruvate dehydrogenase complex (PDC), reduces pyruvate entering into the tricarboxylic acid (TCA) cycle for oxidative phosphorylation, enhances the Warburg effect and promotes tumorigenesis. (PMID: 30993888, PMID: 34749809)

Lagerung

Lagerungsbedingungen:
Bei -20°C lagern.

Lagerungspuffer:

PBS mit 0.02% Natriumazid und 50% Glycerin pH 7.3.

Aliquotieren ist nicht notwendig bei -20°C Lagerung

***** 20ul-Größen enthalten 0.1% BSA**

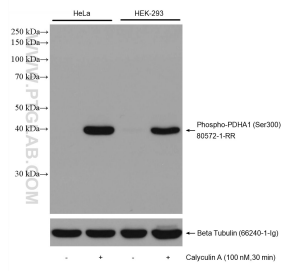
For technical support and original validation data for this product please contact:

T: 1 (888) 4PTGLAB (1-888-478-4522) (toll free in USA), or 1(312) 455-8498 (outside USA)

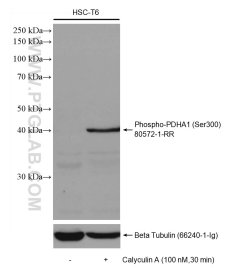
E: proteintech@ptglab.com
W: ptglab.com

This product is exclusively available under Proteintech Group brand and is not available to purchase from any other manufacturer.

Ausgewählte Validierungsdaten



Non-treated and Calyculin A treated cells were subjected to SDS PAGE followed by western blot with 80572-1-RR (Phospho-PDH E1 Alpha (Ser300) antibody) at dilution of 1:10000 incubated at room temperature for 1.5 hours. The membrane was stripped and re-blotted with Beta Tubulin antibody as loading control.



Non-treated and Calyculin A treated HSC-T6 cells were subjected to SDS PAGE followed by western blot with 80572-1-RR (Phospho-PDH E1 Alpha (Ser300) antibody) at dilution of 1:10000 incubated at room temperature for 1.5 hours. The membrane was stripped and re-blotted with Beta Tubulin antibody as loading control.