

Nur für Forschungszwecke

NRF2, NFE2L2 Rekombinanter Antikörper



Katalog-Nr.: 80593-1-RR

Vorgestelltes Produkt

7 Publikationen

Allgemeine Informationen

Katalog-Nr.: 80593-1-RR	GenBank-Zugangsnummer: BC011558	Reinigungsmethode: Protein-A-Reinigung
Größe: 100ul, Konzentration: 500 µg/ml von Nanodrop;	GeneID (NCBI): 4780	CloneNo.: 1121
Wirt: Kaninchen	Vollständiger Name: nuclear factor (erythroid-derived 2)-like 2	Empfohlene Verdünnungen: WB 1:1000-1:5000 IP 0.5-4.0 µg für IP und 1:500-1:1000 für WB
Isotyp: IgG	Berechnete Masse: 605 aa, 68 kDa	IF 1:300-1:1200
Immunogen Katalognummer: AG9489	Beobachtete Masse: 110 kDa	

Anwendungen

Geprüfte Anwendungen: IF, IP, WB, ELISA	Positivkontrollen:
In Publikationen genannte Anwendungen: IF, IHC, WB	WB: MG132 treated HEK-293 cells, mit MG132 behandelte NIH/3T3-Zellen
Getestete Reaktivität: Human, Maus	IP: HeLa-Zellen,
Zitierte Arten: Human, Maus, Ratte	IF: MG132 treated HepG2 cells, HepG2-Zellen

Hintergrundinformationen

NRF2, also named as NFE2L2, belongs to the bZIP family and CNC subfamily. It is a transcription activator that binds to antioxidant response (ARE) elements in the promoter regions of target genes. NRF2 is important for the coordinated up-regulation of genes in response to oxidative stress. It may be involved in the transcriptional activation of genes of the beta-globin cluster by mediating enhancer activity of hypersensitive site 2 of the beta-globin locus control region. Nrf2 is a key player in the regulation of genes encoding for many antioxidative response enzymes. The expression of NRF2 may be induced under oxidative stress (PMID:14567983). In lung cancer, Nrf2 activation in malignant cells has been associated with tumor progression and chemotherapy resistance (PMID:20534738). Identifying patients with abnormal NRF2 expression may be important for selection for chemotherapy in NSCLC. As new investigators break into the emerging field of Nrf2 research, confusion regarding the correct migratory pattern of Nrf2 is causing doubts about the accuracy and reproducibility of published results. This letter provides solid evidence that the actually observed molecular weight of Nrf2 is about 70kDa and 95-110 kDa. (PMID: 22703241).

Bemerkenswerte Veröffentlichungen

Verfasser	Pubmed ID	Journal	Anwendung
Yue Li	36234847	Molecules	WB,IF
Jianqiang Hu	35303762	Br J Pharmacol	WB
Ye Bai	36524376	Mol Med Rep	WB

Lagerung

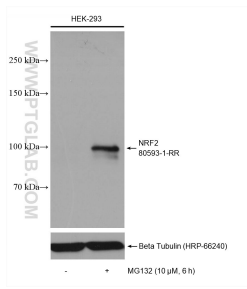
Lagerungsbedingungen:
Bei -20°C lagern. Nach dem Versand ein Jahr lang stabil
Lagerungspuffer:
PBS mit 0.02% Natriumazid und 50% Glycerin pH 7.3.
Aliquotieren ist nicht notwendig bei -20°C Lagerung

*** 20ul-Größen enthalten 0.1% BSA

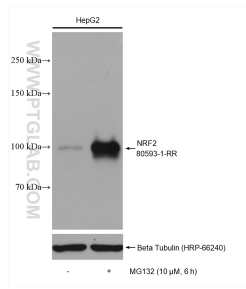
For technical support and original validation data for this product please contact:
T: 1 (888) 4PTGLAB (1-888-478-4522) (toll free in USA), or 1(312) 455-8498 (outside USA)
E: proteintech@ptglab.com
W: ptglab.com

This product is exclusively available under Proteintech Group brand and is not available to purchase from any other manufacturer.

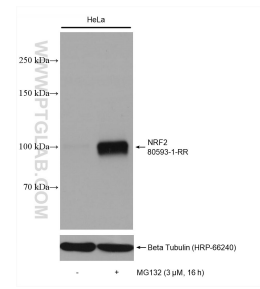
Ausgewählte Validierungsdaten



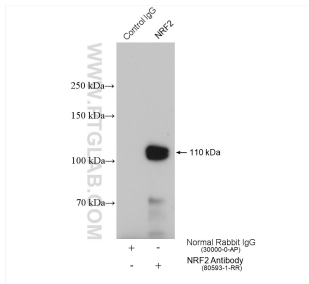
Untreated and MG132 treated HEK-293 cells were subjected to SDS PAGE followed by western blot with 80593-1-RR (NRF2, NFE2L2 antibody) at dilution of 1:2500 incubated at room temperature for 1.5 hours.



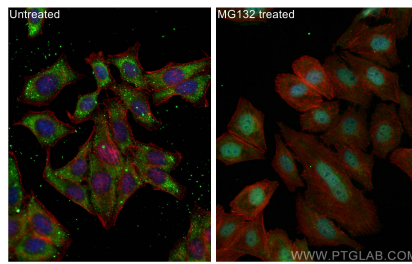
Untreated and MG132 treated HepG2 cells were subjected to SDS PAGE followed by western blot with 80593-1-RR (NRF2, NFE2L2 antibody) at dilution of 1:2500 incubated at room temperature for 1.5 hours.



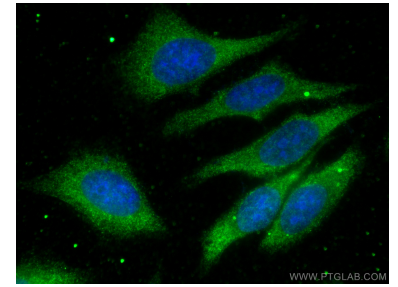
Untreated and MG132 treated HeLa cells were subjected to SDS PAGE followed by western blot with 80593-1-RR (NRF2, NFE2L2 antibody) at dilution of 1:2500 incubated at room temperature for 1.5 hours.



IP result of anti-NRF2, NFE2L2(IP:80593-1-RR, 4µg; Detection:80593-1-RR 1:800) with HeLa cells lysate 2520 µg.



Immunofluorescent analysis of (-20°C Ethanol) fixed MG132 treated HepG2 cells using NRF2, NFE2L2 antibody (80593-1-RR, Clone: 1121) at dilution of 1:600 and CoraLite@488-Conjugated AffiniPure Goat Anti-Rabbit IgG(H+L), CL594-Phalloidin (red).



Immunofluorescent analysis of (-20°C Methanol) fixed HepG2 cells using NRF2, NFE2L2 antibody (80593-1-RR, Clone: 1121) at dilution of 1:200 and CoraLite@488-Conjugated AffiniPure Goat Anti-Rabbit IgG(H+L).