

Allgemeine Informationen

Katalog-Nr.: 80756-1-RR	GenBank-Zugangsnummer: BC001060	Reinigungsmethode: Protein-A-Reinigung
Größe: 100ul , Konzentration: 1000 µg/ml von7849 Nanodrop;	GeneID (NCBI): paired box 8	CloneNo.: 6B14
Wirt: Kaninchen	Vollständiger Name: paired box 8	Empfohlene Verdünnungen: WB 1:5000-1:50000 IHC 1:5000-1:20000 IF 1:650-1:2600
Isotyp: IgG	Berechnete Masse: 48 kDa	
Immunogen Katalognummer: AG0306	Beobachtete Masse: 48 kDa, 58 kDa	

Anwendungen

Geprüfte Anwendungen:
IF, IHC, WB, ELISA

Getestete Reaktivität:
Human

Hinweis-IHC: Antigenmaskierung mit TE-Puffer pH 9,0 empfohlen. (*) Wahlweise kann die Antigenmaskierung auch mit Citratpuffer pH 6,0 erfolgen.

Positivkontrollen:

WB : SKOV-3-Zellen,

IHC : humanes Ovarialkarzinomgewebe, humanes Nierenzellkarzinomgewebe, humanes Schilddrüsenkarzinomgewebe

IF : SKOV-3-Zellen,

Hintergrundinformationen

PAX8 is a member of the paired box (PAX) family of transcription factors, typically containing a paired box domain and a paired-type homeodomain. It is expressed during organogenesis of the thyroid gland, kidney and Mullerian system. It is thought to regulate the expression of Wilms tumor suppressor (WT1) gene and mutations in PAX8 have been associated with Wilms tumor cells, thyroid and ovarian carcinomas. PAX8 is a useful marker in distinguishing ovarian carcinomas from mammary carcinomas (PMID: 18724243). PAX8 is expressed in a high percentage of ovarian serous, endometrioid, and clear cell carcinomas, but only rarely in primary ovarian mucinous adenocarcinoma.

Lagerung

Lagerungsbedingungen:

Bei -20°C lagern. Nach dem Versand ein Jahr lang stabil

Lagerungspuffer:

PBS mit 0.02% Natriumazid und 50% Glycerin pH 7.3.

Aliquotieren ist nicht notwendig bei -20°C Lagerung

***** 20ul-Größen enthalten 0.1% BSA**

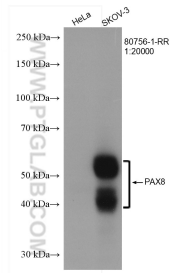
For technical support and original validation data for this product please contact:

T: 1 (888) 4PTGLAB (1-888-478-4522) (toll free in USA), or 1(312) 455-8498 (outside USA)

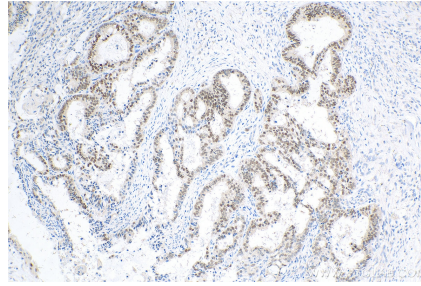
E: proteintech@ptglab.com
W: ptglab.com

This product is exclusively available under Proteintech Group brand and is not available to purchase from any other manufacturer.

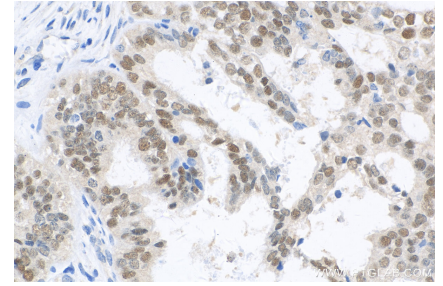
Ausgewählte Validierungsdaten



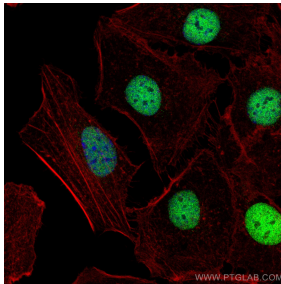
Various lysates were subjected to SDS PAGE followed by western blot with 80756-1-RR (PAX8 antibody) at dilution of 1:20000 incubated at room temperature for 1.5 hours.



Immunohistochemical analysis of paraffin-embedded human ovary tumor tissue slide using 80756-1-RR (PAX8 antibody) at dilution of 1:8300 (under 10x lens). Heat mediated antigen retrieval with Tris-EDTA buffer (pH 9.0).



Immunohistochemical analysis of paraffin-embedded human ovary tumor tissue slide using 80756-1-RR (PAX8 antibody) at dilution of 1:8300 (under 40x lens). Heat mediated antigen retrieval with Tris-EDTA buffer (pH 9.0).



Immunofluorescent analysis of (4% PFA) fixed SKOV-3 cells using PAX8 antibody (80756-1-RR, Clone: 6B14) at dilution of 1:1300 and CoraLite®488-Conjugated AffiniPure Goat Anti-Rabbit IgG(H+L), CL594-Phalloidin (red).