

Nur für Forschungszwecke

# Alpha Tubulin Rekombinanter Antikörper



Katalog-Nr.:80762-1-RR

1 Publikationen

## Allgemeine Informationen

<b>Katalog-Nr.:</b> 80762-1-RR	<b>GenBank-Zugangsnummer:</b> BC009314	<b>Reinigungsmethode:</b> Protein-A-Reinigung
<b>Größe:</b> 100ul , Konzentration: 1000 µg/ml von10376	<b>GeneID (NCBI):</b> 10376	<b>CloneNo.:</b> 1G7
<b>Nanodrop;</b>	<b>Vollständiger Name:</b> tubulin, alpha 1b	<b>Empfohlene Verdünnungen:</b> WB 1:5000-1:50000 IF 1:500-1:2000
<b>Wirt:</b> Kaninchen	<b>Berechnete Masse:</b> 50 kDa	
<b>Isotyp:</b> IgG		
<b>Immunogen Katalognummer:</b> AG18034		

## Anwendungen

<b>Geprüfte Anwendungen:</b> IF, WB, ELISA	<b>Positivkontrollen:</b> WB : HeLa-Zellen, HEK-293-Zellen, Jurkat-Zellen, K-562-Zellen, NIH/3T3-Zellen IF : C2C12-Zellen,
<b>In Publikationen genannte Anwendungen:</b> WB	
<b>Getestete Reaktivität:</b> Human, Maus, Ratte	
<b>Zitierte Arten:</b> Maus	

## Hintergrundinformationen

There are five tubulins in human cells: alpha, beta, gamma, delta, and epsilon. Tubulins are conserved across species. They form heterodimers, which multimerize to form a microtubule filament. An alpha and beta tubulin heterodimer is the basic structural unit of microtubules. The heterodimer does not come apart once formed. The alpha and beta tubulins, which are each about 55 kDa MW, are homologous but not identical. Alpha tubulin is useful for scientists across fields as an internal control due to its high, ubiquitous expression pattern.

## Bemerkenswerte Veröffentlichungen

Verfasser	Pubmed ID	Journal	Anwendung
Danjie Liu	35859853	Dose Response	WB

## Lagerung

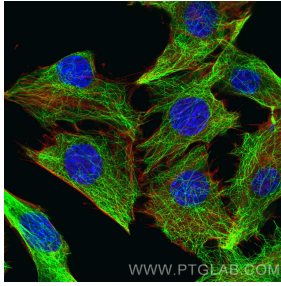
**Lagerungsbedingungen:**  
Bei -20°C lagern.  
**Lagerungspuffer:**  
PBS mit 0.02% Natriumazid und 50% Glycerin pH 7.3.  
Aliquotieren ist nicht notwendig bei -20°C Lagerung

\*\*\* 20ul-Größen enthalten 0.1% BSA

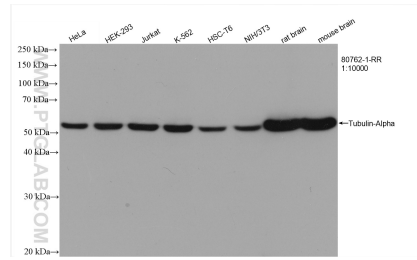
For technical support and original validation data for this product please contact:  
T: 1 (888) 4PTGLAB (1-888-478-4522) (toll free in USA), or 1(312) 455-8498 (outside USA)  
E: proteintech@ptglab.com  
W: ptglab.com

This product is exclusively available under Proteintech Group brand and is not available to purchase from any other manufacturer.

## Ausgewählte Validierungsdaten



Immunofluorescent analysis of (4% PFA) fixed C2C12 cells using Alpha Tubulin antibody (80762-1-RR, Clone: 1G7) at dilution of 1:1000 and CoraLite®488-Conjugated AffiniPure Goat Anti-Rabbit IgG(H+L), CL594-Phalloidin (red).



Various lysates were subjected to SDS PAGE followed by western blot with 80762-1-RR (Tubulin-Alpha antibody) at dilution of 1:10000 incubated at room temperature for 1.5 hours.