

Nur für Forschungszwecke

# Ribosomal protein L4 Rekombinanter Antikörper



Katalog-Nr.: 80959-1-RR

## Allgemeine Informationen

<b>Katalog-Nr.:</b> 80959-1-RR	<b>GenBank-Zugangsnummer:</b> BC009888	<b>Reinigungsmethode:</b> Protein-A-Reinigung
<b>Größe:</b> 100ul , Konzentration: 1000 µg/ml von6124 Nanodrop;	<b>GeneID (NCBI):</b> von6124	<b>CloneNo.:</b> 3K6
<b>Wirt:</b> Kaninchen	<b>Vollständiger Name:</b> ribosomal protein L4	<b>Empfohlene Verdünnungen:</b> WB 1:5000-1:50000 IF 1:200-1:800
<b>Isotyp:</b> IgG	<b>Berechnete Masse:</b> 48 kDa	
<b>Immunogen Katalognummer:</b> AG28728	<b>Beobachtete Masse:</b> 48 kDa	

## Anwendungen

**Geprüfte Anwendungen:**  
IF, WB, ELISA

**Getestete Reaktivität:**  
Human

### Positivkontrollen:

**WB :** HEK-293-Zellen, HeLa-Zellen, HepG2-Zellen, Jurkat-Zellen, K-562-Zellen, U2OS-Zellen

**IF :** HepG2-Zellen,

## Hintergrundinformationen

60S ribosomal protein L4 is encoded by RPL4 (or RPL1) gene. RPL4 is a component of 60S subunit of ribosome, and belongs to the L4E family. By interacting with c-Myb, RPL4 plays a important role in c-myc expression in response to growth factor and nutritional signals. Recently RPL4 was reported to be able to increase efficiency of viral recoding sequence.

## Lagerung

**Lagerungsbedingungen:**  
Bei -20°C lagern. Nach dem Versand ein Jahr lang stabil

**Lagerungspuffer:**  
PBS mit 0.02% Natriumazid und 50% Glycerin pH 7.3.

Aliquotieren ist nicht notwendig bei -20°C Lagerung

**\*\*\* 20ul-Größen enthalten 0.1% BSA**

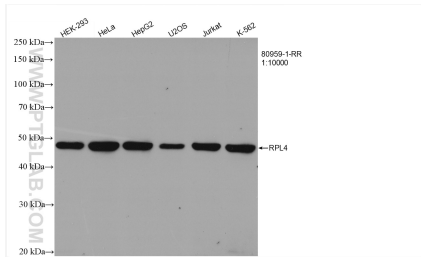
For technical support and original validation data for this product please contact:

T: 1 (888) 4PTGLAB (1-888-478-4522) (toll free in USA), or 1(312) 455-8498 (outside USA)

E: [proteintech@ptglab.com](mailto:proteintech@ptglab.com)  
W: [ptglab.com](http://ptglab.com)

**This product is exclusively available under Proteintech Group brand and is not available to purchase from any other manufacturer.**

## Ausgewählte Validierungsdaten



Various lysates were subjected to SDS PAGE followed by western blot with 80959-1-RR (RPL4 antibody) at dilution of 1:10000 incubated at room temperature for 1.5 hours.



Immunofluorescent analysis of (4% PFA) fixed HepG2 cells using Ribosomal protein L4 antibody (80959-1-RR, Clone: 3K6) at dilution of 1:400 and CoraLite® 488-Conjugated AffiniPure Goat Anti-Rabbit IgG(H+L), CL594-Phalloidin (red).