

Allgemeine Informationen

Katalog-Nr.: 81004-1-RR	GenBank-Zugangsnummer: BC067797	Reinigungsmethode: Protein-A-Reinigung
Größe: 100ul , Konzentration: 1000 µg/ml von81631	GeneID (NCBI): von81631	CloneNo.: 5P12
Nanodrop;	Vollständiger Name: microtubule-associated protein 1	Empfohlene Verdünnungen: WB 1:1000-1:5000
Wirt: Kaninchen	light chain 3 beta	IHC 1:250-1:1000
Isotyp: IgG	Berechnete Masse: 15 kDa	IF 1:500-1:2000
Immunogen Katalognummer: AG6144	Beobachtete Masse: 14-18 kDa	

Anwendungen

Geprüfte Anwendungen:

IF, IHC, WB, ELISA

Getestete Reaktivität:

Hausschwein, Human, Maus, Ratte

Hinweis-IHC: Antigendemaskierung mit TE-Puffer pH 9,0 empfohlen. (*) Wahlweise kann die Antigendemaskierung auch mit Citratpuffer pH 6,0 erfolgen.

Positivkontrollen:

WB : HEK-293-Zellen, Hausschwein-Hirngewebe, HeLa-Zellen, Maushirngewebe, mit Chloroquin behandelte HEK-293-Zellen, mit Chloroquin behandelte HeLa-Zellen, Rattenhirngewebe

IHC : humanes Kolonkarzinomgewebe,

IF : mit Chloroquin behandelte HeLa-Zellen,

Hintergrundinformationen

Map1LC3, also known as LC3, is the human homolog of yeast Atg8 and is involved in the formation of autophagosomal vacuoles, called autophagosomes. Three human Map1LC3 isoforms, MAP1LC3A, MAP1LC3B, and MAP1LC3C, undergo post-translational modifications during autophagy. And they differ in their post-translation modifications during autophagy. Map1LC3 also exists in two modified forms, an 18 kDa cytoplasmic form that was originally identified as a subunit of the microtubule-associated protein 1, and a 14-16 kDa form that is associated with the autophagosome membrane.

Lagerung

Lagerungsbedingungen:

Bei -20°C lagern. Nach dem Versand ein Jahr lang stabil

Lagerungspuffer:

PBS mit 0.02% Natriumazid und 50% Glycerin pH 7.3.

Aliquotieren ist nicht notwendig bei -20°C Lagerung

*** 20ul-Größen enthalten 0.1% BSA

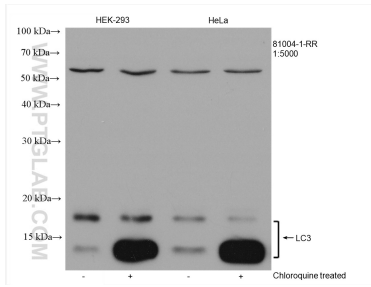
For technical support and original validation data for this product please contact:

T: 1 (888) 4PTGLAB (1-888-478-4522) (toll free in USA), or 1(312) 455-8498 (outside USA)

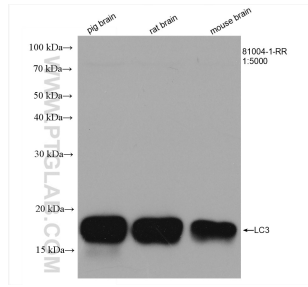
E: proteintech@ptglab.com
W: ptglab.com

This product is exclusively available under Proteintech Group brand and is not available to purchase from any other manufacturer.

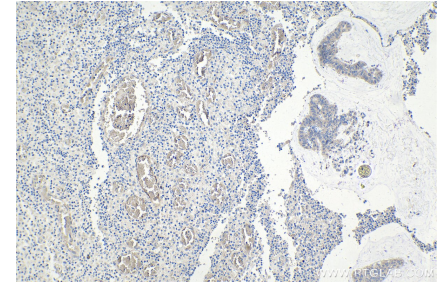
Ausgewählte Validierungsdaten



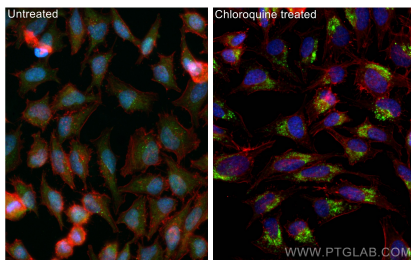
Untreated and chloroquine treated HEK-293 cells, untreated and chloroquine treated HeLa cells were subjected to SDS PAGE followed by western blot with 81004-1-RR (LC3 antibody) at dilution of 1:5000 incubated at room temperature for 1.5 hours.



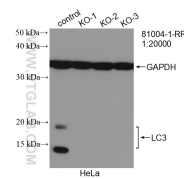
Various lysates were subjected to SDS PAGE followed by western blot with 81004-1-RR (LC3 antibody) at dilution of 1:5000 incubated at room temperature for 1.5 hours.



Immunohistochemical analysis of paraffin-embedded human colon cancer tissue slide using 81004-1-RR (LC3 antibody) at dilution of 1:500 (under 10x lens). Heat mediated antigen retrieval with Tris-EDTA buffer (pH 9.0).



Immunofluorescent analysis of (-20°C Methanol) fixed Chloroquine treated HeLa cells using LC3 antibody (81004-1-RR, Clone: 5P12) at dilution of 1:1000 and CoraLite@488-Conjugated AffiniPure Goat Anti-Rabbit IgG(H+L), CoraLite@594 Beta Actin antibody (CL594-66009, Clone: 2D4H5, red).



WB result of LC3 antibody (81004-1-RR; 1:20000; room temperature for 1.5 hours) with negative Control and LC3 knockout HeLa cells.