

Nur für Forschungszwecke

Lamin A/C Rekombinanter Antikörper



Katalog-Nr.:81042-1-RR

Vorgestelltes Produkt

Allgemeine Informationen

Katalog-Nr.: 81042-1-RR	GenBank-Zugangsnummer: BC003162	Reinigungsmethode: Protein-A-Reinigung
Größe: 100ul, Konzentration: 1000 µg/ml von4000 Nanodrop;	GeneID (NCBI): lamin A/C	CloneNo.: 5I16
Wirt: Kaninchen	Vollständiger Name: lamin A/C	Empfohlene Verdünnungen: WB 1:20000-1:100000 IHC 1:3000-1:12000 IF 1:500-1:2000
Isotyp: IgG	Berechnete Masse: 65 kDa	
Immunogen Katalognummer: AG0408	Beobachtete Masse: 65-70 kDa	

Anwendungen

Geprüfte Anwendungen:

IF, IHC, WB, ELISA

Getestete Reaktivität:

Human, Maus, Ratte

Hinweis-IHC: Antigenmaskierung mit TE-Puffer pH 9,0 empfohlen. (*) Wahlweise kann die Antigenmaskierung auch mit Citratpuffer pH 6,0 erfolgen.

Positivkontrollen:

WB: HepG2-Zellen, A431-Zellen, C6-Zellen, HeLa-Zellen, HUVEC-Zellen, NIH/3T3-Zellen, RAW 264.7-Zellen, SKOV-3-Zellen

IHC: Mausherzgewebe,

IF: HepG2-Zellen,

Hintergrundinformationen

Lamin A/C is also named as LMNA, or LMN1. The lamin family of proteins make up the matrix and are highly conserved in evolution. During mitosis, the lamina matrix is reversibly disassembled as the lamin proteins are phosphorylated. Lamin proteins are thought to be involved in nuclear stability, chromatin structure and gene expression. The lack of lamin A/C can be as a novel marker for undifferentiated embryonic stem cells and lamin A/C expression is as an early indicator of differentiation (PMID: 16179429). Mutations in this gene lead to several diseases: Emery-Dreifuss muscular dystrophy, familial partial lipodystrophy, limb girdle muscular dystrophy, dilated cardiomyopathy, Charcot-Marie-Tooth disease, and Hutchinson-Gilford progeria syndrome. This protein has 4 isoforms produced by alternative splicing with the molecular weight of 74 kDa, 65 kDa, 70 kDa and 64 kDa. This antibody can recognize 4 isoforms of Lamin A/C.

Lagerung

Lagerungsbedingungen:

Bei -20°C lagern. Nach dem Versand ein Jahr lang stabil

Lagerungspuffer:

PBS mit 0.02% Natriumazid und 50% Glycerin pH 7.3.

Aliquotieren ist nicht notwendig bei -20°C Lagerung

*** 20ul-Größen enthalten 0.1% BSA

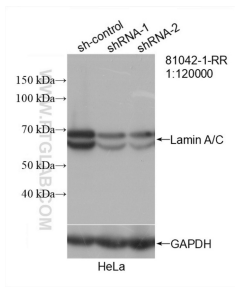
For technical support and original validation data for this product please contact:

T: 1 (888) 4PTGLAB (1-888-478-4522) (toll free in USA), or 1(312) 455-8498 (outside USA)

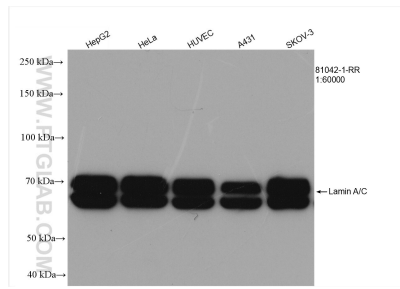
E: proteintech@ptglab.com
W: ptglab.com

This product is exclusively available under Proteintech Group brand and is not available to purchase from any other manufacturer.

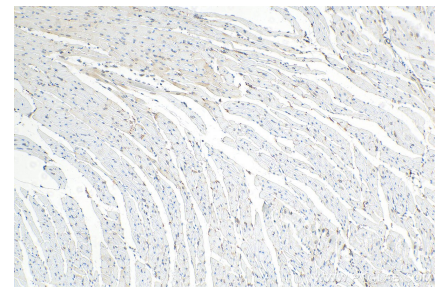
Ausgewählte Validierungsdaten



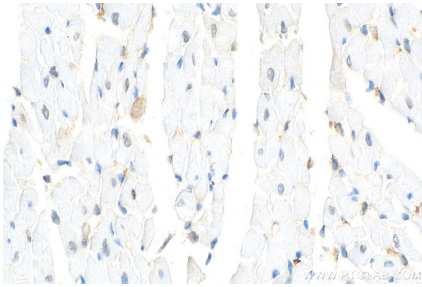
WB result of Lamin A/C antibody (81042-1-RR; 1:120000; incubated at room temperature for 1.5 hours) with sh-Control and sh-Lamin A/C transfected HeLa cells.



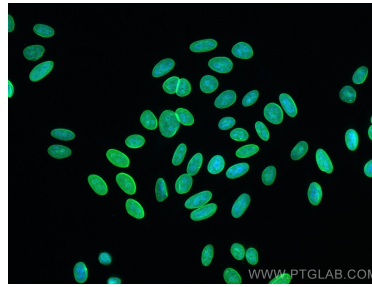
Various lysates were subjected to SDS PAGE followed by western blot with 81042-1-RR (Lamin A/C antibody) at dilution of 1:60000 incubated at room temperature for 1.5 hours.



Immunohistochemical analysis of paraffin-embedded mouse heart tissue slide using 81042-1-RR (Lamin A/C antibody) at dilution of 1:6000 (under 10x lens). Heat mediated antigen retrieval with Tris-EDTA buffer (pH 9.0).



Immunohistochemical analysis of paraffin-embedded mouse heart tissue slide using 81042-1-RR (Lamin A/C antibody) at dilution of 1:6000 (under 40x lens). Heat mediated antigen retrieval with Tris-EDTA buffer (pH 9.0).



Immunofluorescent analysis of (-20°C Methanol) fixed HepG2 cells using Lamin A/C antibody (81042-1-RR, Clone: 5116) at dilution of 1:1000 and CoraLite® 488-Conjugated AffiniPure Goat Anti-Rabbit IgG(H+L).