

Nur für Forschungszwecke

AFP Rekombinanter Antikörper

Katalog-Nr.:81083-1-RR

Vorgestelltes Produkt



Allgemeine Informationen

Katalog-Nr.: 81083-1-RR	GenBank-Zugangsnummer: BC027881	Reinigungsmethode: Protein-A-Reinigung
Größe: 100ul , Konzentration: 1000 µg/ml von174 Nanodrop;	GeneID (NCBI): 174	CloneNo.: 2D17
Wirt: Kaninchen	Vollständiger Name: alpha-fetoprotein	Empfohlene Verdünnungen: WB 1:5000-1:50000 IHC 1:50-1:500
Isotyp: IgG	Berechnete Masse: 69 kDa	
Immunogen Katalognummer: AG6089	Beobachtete Masse: 68-72 kDa	

Anwendungen

Geprüfte Anwendungen:

IHC, WB, ELISA

Getestete Reaktivität:

Human

Hinweis-IHC: Antigendemaskierung mit TE-Puffer pH 9,0 empfohlen. (*) Wahlweise kann die Antigendemaskierung auch mit Citratpuffer pH 6,0 erfolgen.

Positivkontrollen:

WB : HepG2-Zellen, HuH-7-Zellen, humanes Plazenta-Gewebe

IHC : humanes Kolonkarzinomgewebe,

Hintergrundinformationen

AFP, also known as Alpha-fetoprotein, is a major plasma protein in the fetus and its concentration is very low in the adult (PubMed:24120489). AFP is considered a marker of hepatocyte precursors. AFP can be detected at abnormally high concentrations in hepatocellular carcinomas as well as in the plasma and ascitic fluid of adults with hepatoma. High AFP concentrations have been correlated with tumor cell growth, indicating that AFP can serve as a tumor marker (PubMed: 18669658).

Lagerung

Lagerungsbedingungen:

Bei -20°C lagern. Nach dem Versand ein Jahr lang stabil

Lagerungspuffer:

PBS mit 0.02% Natriumazid und 50% Glycerin pH 7.3.

Aliquotieren ist nicht notwendig bei -20°C Lagerung

*** 20ul-Größen enthalten 0.1% BSA

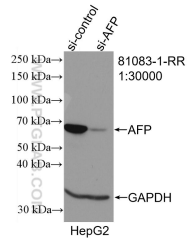
For technical support and original validation data for this product please contact:

T: 1 (888) 4PTGLAB (1-888-478-4522) (toll free in USA), or 1(312) 455-8498 (outside USA)

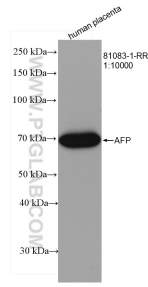
E: proteintech@ptglab.com
W: ptglab.com

This product is exclusively available under Proteintech Group brand and is not available to purchase from any other manufacturer.

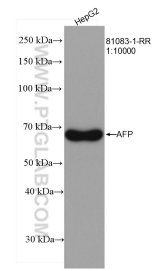
Ausgewählte Validierungsdaten



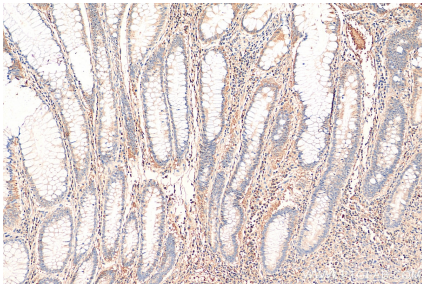
WB result of AFP antibody (81083-1-RR; 1:14000; incubated at room temperature for 1.5 hours) with sh-Control and sh-AFP transfected HepG2 cells.



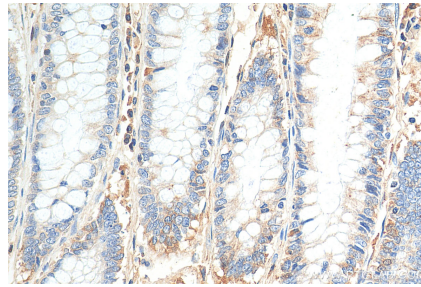
human placenta were subjected to SDS PAGE followed by western blot with 81083-1-RR (AFP antibody) at dilution of 1:10000 incubated at room temperature for 1.5 hours.



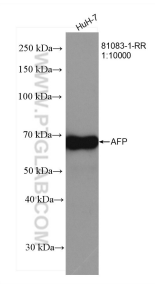
HepG2 cells were subjected to SDS PAGE followed by western blot with 81083-1-RR (AFP antibody) at dilution of 1:10000 incubated at room temperature for 1.5 hours.



Immunohistochemical analysis of paraffin-embedded human colon cancer tissue slide using 81083-1-RR (AFP antibody) at dilution of 1:200 (under 10x lens). Heat mediated antigen retrieval with Tris-EDTA buffer (pH 9.0).



Immunohistochemical analysis of paraffin-embedded human colon cancer tissue slide using 81083-1-RR (AFP antibody) at dilution of 1:200 (under 40x lens). Heat mediated antigen retrieval with Tris-EDTA buffer (pH 9.0).



HuH-7 cells were subjected to SDS PAGE followed by western blot with 81083-1-RR (AFP antibody) at dilution of 1:10000 incubated at room temperature for 1.5 hours.