

Nur für Forschungszwecke

# Beta Actin Rekombinanter Antikörper



Katalog-Nr.:81115-1-RR

62 Publikationen

## Allgemeine Informationen

<b>Katalog-Nr.:</b> 81115-1-RR	<b>GenBank-Zugangsnummer:</b> BC002409	<b>Reinigungsmethode:</b> Protein-A-Reinigung
<b>Größe:</b> 100ul , Konzentration: 1000 µg/ml von60 Nanodrop;	<b>GeneID (NCBI):</b> actin, beta	<b>CloneNo.:</b> 4H1
<b>Wirt:</b> Kaninchen	<b>Vollständiger Name:</b> actin, beta	<b>Empfohlene Verdünnungen:</b> WB 1:5000-1:50000 IHC 1:1000-1:4000 IF 1:950-1:3800
<b>Isotyp:</b> IgG	<b>Berechnete Masse:</b> 375 aa, 42 kDa	
<b>Immunogen Katalognummer:</b> AG14521	<b>Beobachtete Masse:</b> 42 kDa	

## Anwendungen

### Geprüfte Anwendungen:

IF, IHC, WB, ELISA

### In Publikationen genannte Anwendungen:

IF, WB

### Getestete Reaktivität:

Hausschwein, Human, Maus, Ratte

### Zitierte Arten:

Hausschwein, Human, Maus, Ratte

**Hinweis-IHC: Antigendemaskierung mit TE-Puffer pH 9,0 empfohlen. (\*) Wahlweise kann die Antigendemaskierung auch mit Citratpuffer pH 6,0 erfolgen.**

### Positivkontrollen:

**WB** : HeLa-Zellen, Hausschwein-Hirngewebe, HEK-293-Zellen, Jurkat-Zellen, Maushirngewebe, NIH/3T3-Zellen, Rattenhirngewebe

**IHC** : Ratten-Kolongewebe,

**IF** : U2OS-Zellen, A549-Zellen

## Hintergrundinformationen

Beta Actin, also named as ACTB and F-Actin, belongs to the actin family. Actins are highly conserved globular proteins that are involved in various types of cell motility and are ubiquitously expressed in all eukaryotic cells. At least six isoforms of actins are known in mammals and other vertebrates: alpha (ACTC1, cardiac muscle 1), alpha 1 (ACTA1, skeletal muscle) and 2 (ACTA2, aortic smooth muscle), beta (ACTB), gamma 1 (ACTG1) and 2 (ACTG2, enteric smooth muscle). Beta and gamma 1 are two non-muscle actin proteins. Most actins consist of 376aa, while ACTG2 (rich in muscles) has 375aa and ACTG1(found in non-muscle cells) has only 374aa. Beta actin has been widely used as the internal control in RT-PCR and Western Blotting as a 42-kDa protein. However, the 37-40, 31, 15 kDa cleaved fragment of beta actin can be generated during apoptosis process. This antibody was generated against N-terminal region of human beta actin protein and can cross-react with other actins. (9173887, 11217076, 10229193 )

## Bemerkenswerte Veröffentlichungen

Verfasser	Pubmed ID	Journal	Anwendung
Xin Xu	36178722	Environ Toxicol	WB
Jiying Hou	36077440	Int J Mol Sci	WB
Jialiang Luo	36327873	Int Immunopharmacol	WB

## Lagerung

### Lagerungsbedingungen:

Bei -20°C lagern. Nach dem Versand ein Jahr lang stabil

### Lagerungspuffer:

PBS mit 0.02% Natriumazid und 50% Glycerin pH 7.3.

Aliquotieren ist nicht notwendig bei -20°C Lagerung

\*\*\* 20ul-Größen enthalten 0.1% BSA

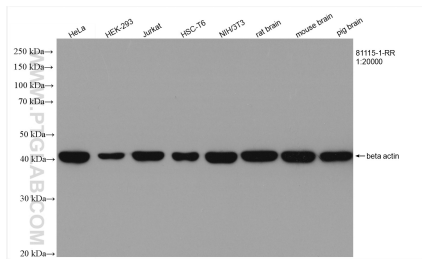
For technical support and original validation data for this product please contact:

T: 1 (888) 4PTGLAB (1-888-478-4522) (toll free in USA), or 1(312) 455-8498 (outside USA)

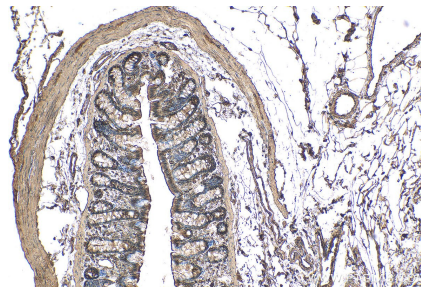
E: proteintech@ptglab.com  
W: ptglab.com

This product is exclusively available under Proteintech Group brand and is not available to purchase from any other manufacturer.

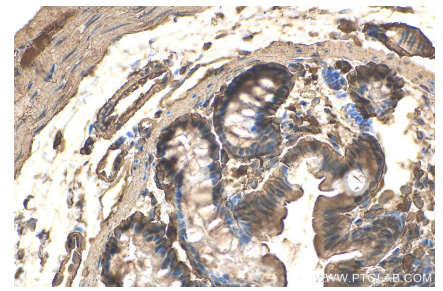
## Ausgewählte Validierungsdaten



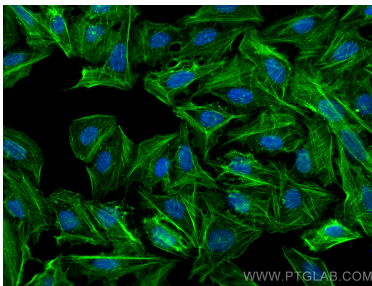
Various lysates were subjected to SDS PAGE followed by western blot with 81115-1-RR (beta actin antibody) at dilution of 1:20000 incubated at room temperature for 1.5 hours.



Immunohistochemical analysis of paraffin-embedded rat colon tissue slide using 81115-1-RR (Beta Actin antibody) at dilution of 1:2000 (under 10x lens). Heat mediated antigen retrieval with Tris-EDTA buffer (pH 9.0).



Immunohistochemical analysis of paraffin-embedded rat colon tissue slide using 81115-1-RR (Beta Actin antibody) at dilution of 1:2000 (under 40x lens). Heat mediated antigen retrieval with Tris-EDTA buffer (pH 9.0).



Immunofluorescent analysis of (4% PFA) fixed U2OS cells using beta actin antibody (81115-1-RR, Clone: 4H1 ) at dilution of 1:1900 and CoraLite®488-Conjugated AffiniPure Goat Anti-Rabbit IgG(H+L).