

Nur für Forschungszwecke

# STIM1 Rekombinanter Antikörper

Katalog-Nr.: 81156-1-RR



## Allgemeine Informationen

<b>Katalog-Nr.:</b> 81156-1-RR	<b>GenBank-Zugangsnummer:</b> BC021300	<b>Reinigungsmethode:</b> Protein-A-Reinigung
<b>Größe:</b> 100ul , Konzentration: 1000 µg/ml von6786 Nanodrop;	<b>GeneID (NCBI):</b> 6786	<b>CloneNo.:</b> 1B13
<b>Wirt:</b> Kaninchen	<b>Vollständiger Name:</b> stromal interaction molecule 1	<b>Empfohlene Verdünnungen:</b> WB 1:5000-1:50000
<b>Isotyp:</b> IgG	<b>Berechnete Masse:</b> 685 aa, 77 kDa	
<b>Immunogen Katalognummer:</b> AG2140	<b>Beobachtete Masse:</b> 77 kDa	

## Anwendungen

<b>Geprüfte Anwendungen:</b> WB, ELISA	<b>Positivkontrollen:</b> WB : HeLa-Zellen, A549-Zellen, HepG2-Zellen, Jurkat-Zellen, K-562-Zellen, LNCaP-Zellen, Raji-Zellen
<b>Getestete Reaktivität:</b> Human, Maus, Ratte	

## Hintergrundinformationen

STIM1, also named as GOK, is an ER Ca<sup>2+</sup> sensor. Upon Ca<sup>2+</sup> store depletion, STIM1 clusters at ER-plasma membrane junctions where it interacts with and gates Ca<sup>2+</sup>-permeable Orai1 ion channels. STIM1 is implicated in tumor growth suppression and stromal-haematopoietic cell interactions. Defects in STIM1 gene can cause immune dysfunction with impaired T-cell activation. STIM1 can inhibit L-type voltage-gated Ca(2+) channels in neurons. Temperature is an important regulator of STIM1 function.

## Lagerung

**Lagerungsbedingungen:**  
Bei -20°C lagern.  
**Lagerungspuffer:**  
PBS mit 0.02% Natriumazid und 50% Glycerin pH 7.3.  
Aliquotieren ist nicht notwendig bei -20°C Lagerung

**\*\*\* 20ul-Größen enthalten 0.1% BSA**

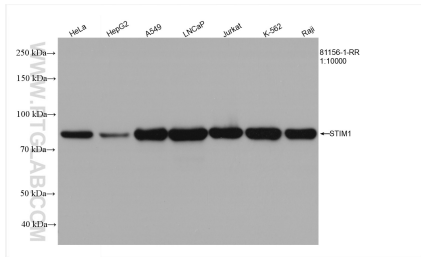
For technical support and original validation data for this product please contact:

T: 1 (888) 4PTGLAB (1-888-478-4522) (toll free in USA), or 1(312) 455-8498 (outside USA)

E: proteintech@ptglab.com  
W: ptglab.com

**This product is exclusively available under Proteintech Group brand and is not available to purchase from any other manufacturer.**

## Ausgewählte Validierungsdaten



Various lysates were subjected to SDS PAGE followed by western blot with 81156-1-RR (STIM1 antibody) at dilution of 1:10000 incubated at room temperature for 1.5 hours.