

Nur für Forschungszwecke

GRB10 Rekombinanter Antikörper

Katalog-Nr.:81225-1-RR



Allgemeine Informationen

Katalog-Nr.: 81225-1-RR	GenBank-Zugangsnummer: BC024285	Reinigungsmethode: Protein-A-Reinigung
Größe: 100ul , Konzentration: 1000 µg/ml von2887	GeneID (NCBI): von2887	CloneNo.: 1D13
Nanodrop;	Vollständiger Name: growth factor receptor-bound protein	Empfohlene Verdünnungen: WB 1:5000-1:50000 IF 1:500-1:2000
Wirt: Kaninchen	10	
Isotyp: IgG	Berechnete Masse: 536aa,61 kDa; 594aa,67 kDa	
Immunogen Katalognummer: AG20355	Beobachtete Masse: 60-70 kDa	

Anwendungen

Geprüfte Anwendungen: IF, WB, ELISA	Positivkontrollen: WB : PC-3-Zellen, NIH/3T3-Zellen IF : LNCaP-Zellen,
Getestete Reaktivität: Human, Maus, Ratte	

Hintergrundinformationen

GRB10 is an adapter protein which modulates coupling of a number of cell surface receptor kinases with specific signaling pathways. GRB10 has three consensus domains including pleckstrin homology (PH) domain, SH2/SH3 domain and Ras-associating domain. By binding to kinases, GRB10 suppresses signals from activated receptors tyrosine kinases, including INSR and IGF1R. It may play a role in mediating ubiquitination of INSR, leading to proteasomal degradation. GRB10 has 4 isoforms with the molecular mass of 60-70 kDa, which are produced by alternative splicing.

Lagerung

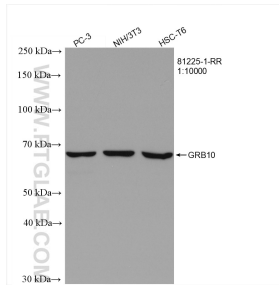
Lagerungsbedingungen:
Bei -20°C lagern. Nach dem Versand ein Jahr lang stabil
Lagerungspuffer:
PBS mit 0.02% Natriumazid und 50% Glycerin pH 7.3.
Aliquotieren ist nicht notwendig bei -20°C Lagerung

***** 20ul-Größen enthalten 0.1% BSA**

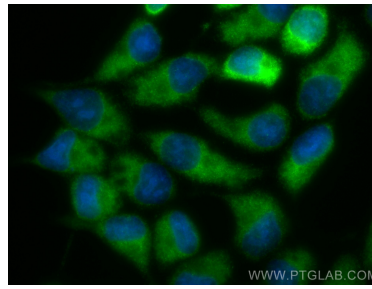
For technical support and original validation data for this product please contact:
T: 1 (888) 4PTGLAB (1-888-478-4522) (toll free in USA), or 1(312) 455-8498 (outside USA)
E: proteintech@ptglab.com
W: ptglab.com

This product is exclusively available under Proteintech Group brand and is not available to purchase from any other manufacturer.

Ausgewählte Validierungsdaten



Various lysates were subjected to SDS PAGE followed by western blot with 81225-1-RR (GRB10 antibody) at dilution of 1:10000 incubated at room temperature for 1.5 hours.



Immunofluorescent analysis of (-20°C Methanol) fixed LNCaP cells using GRB10 antibody (81225-1-RR, Clone: 1D13) at dilution of 1:1000 and CoraLite®488-Conjugated AffiniPure Goat Anti-Rabbit IgG(H+L).